

internal & single-stage product catalog



BIOHORIZONS[®]
SCIENCE • INNOVATION • SERVICE

Company Overview	1
Laser-Lok® Overview	2-3
Implant Overview	4-5
Section 1: Surgical Product Catalog	
Implants	6-7
VIP Software	8
Surgical Instruments	9-11
Ancillary Instruments	12-13
Collaterals	14-15
W&H Motors & Accessories	16-17
Section 2: Restorative Product Catalog	
Abutment Overview	18
Impression Component Overview	19
Healing Abutments	20
Simple Solutions	21
Individual Internal Abutments	22-25
Internal Impression Components	26-27
Simple Solutions Individual Components	28-29
Locator Abutment Components	30-31
Ball Abutment Components	32-33
Abutment for Screw Components	34-35
Single-stage Components	36-37
Prosthetic Instrumentation	38-39
Icon Legend & References	40
Ordering & Warranty Information	41

BIOHORIZONS®

SCIENCE • INNOVATION • SERVICE

99.2%
documented
implant
success
rate¹



BioHorizons is one of the fastest growing companies in the dental implant industry. Our comprehensive portfolio of dental implants and biologics products is evidence-based and scientifically-proven. From the launch of the External implant system (Maestro) in 1997, to the introduction of the Tapered Internal implant incorporating Laser-Lok® technology in 2007, BioHorizons has continued to provide clinicians unique products supported by university-based research.

global
leader for
biologic
based
solutions



SCIENCE

BioHorizons is known for using science and innovation to create unique products with proven surgical and esthetic results.

INNOVATION

Our highly advanced implant technologies, biologic products and computer guided surgery software have placed BioHorizons at the forefront of implant dentistry.

products
sold
in over
70
countries



SERVICE

BioHorizons understands the importance of providing excellent service. Our global network of professional representatives and our highly trained customer care support team are well-equipped to meet the needs of patients and clinicians.

Laser-Lok Technology



Microchannels viewed using scanning electron microscopy (SEM) at 1000X

In vitro research

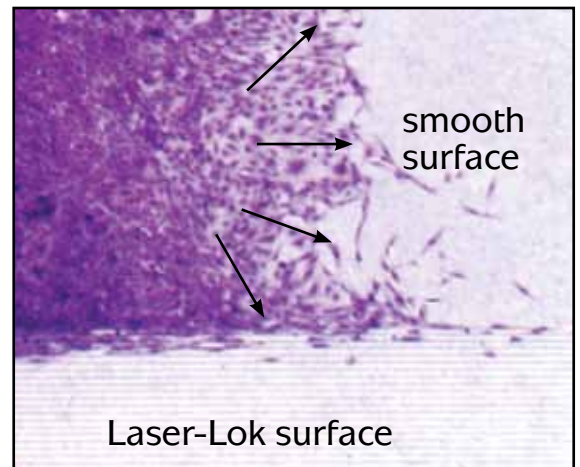
Cellular activity was studied on a variety of surface finishes including smooth, roughened and specifically engineered microgeometries. The engineered microgeometries were designed in a variety of repeating patterns and in a number of different sizes. Through various cell model designs, it was shown that a linear grooved pattern in the range of 8 to 12 microns was optimal for inhibiting cell growth,² maximizing cellular contact guidance³ and providing a directed tissue response.⁴

In vivo validation

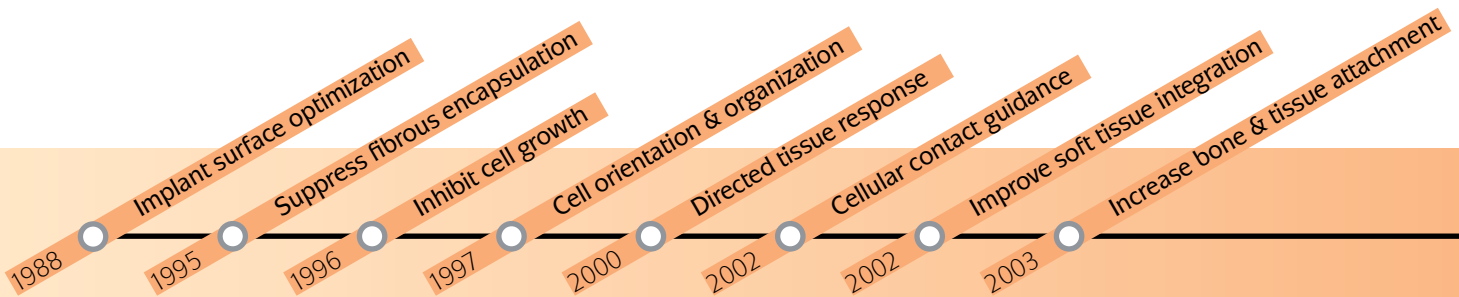
A series of animal studies (rabbit and canine) were conducted in both an implantable chamber model (intended to assess biologic response) and a dental model to assess the differences in tissue response to an engineered microgeometry versus other commonly used surfaces. Through these studies, it was shown that a microchannel pattern of 8 to 12 microns improved soft tissue integration,⁵ controlled cell ingrowth,⁶ increased bone and tissue attachment⁷ and reduced bone loss.⁸

Laser-Lok microchannels are a series of precision-engineered, cell-sized channels laser-etched onto the collar of BioHorizons dental implants. This patented surface is unique within the industry as the only surface treatment shown to achieve connective tissue attachment as well as attach and retain both hard and soft tissue.

Laser-Lok microchannels are the result of over 15 years of research and documented studies at leading universities. As part of the research, numerous *in vitro*, animal and human studies were conducted to (1) understand how bone and soft tissue cells react to various types of surface geometries and (2) evaluate how specific surface microgeometries affect crestal bone and the biologic width around dental implants.



Human bronchial epithelial cell colony on smooth and microchannel surfaces

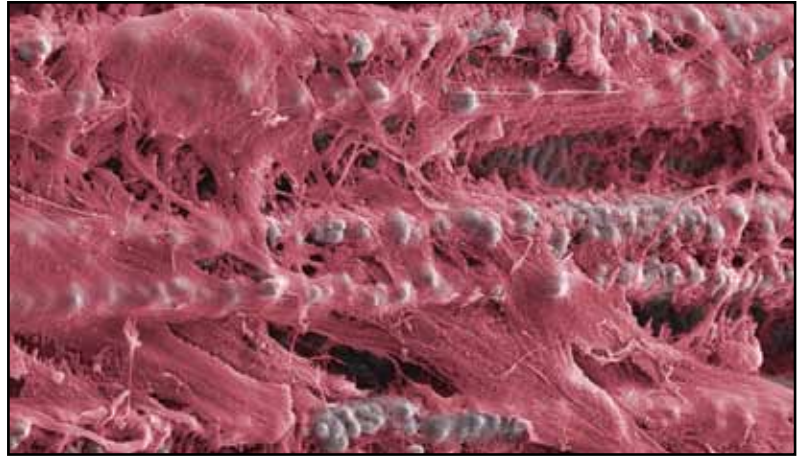


Laser-Lok development timeline

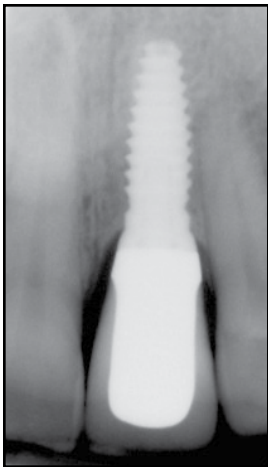
Laser-Lok Technology

Clinical evidence

To evaluate how dental implants treated with the Laser-Lok microchannels benefit patients, a series of human histologic case studies and prospective controlled studies have been conducted. In a prospective, controlled multi-center study conducted by the Group for Implant Research in Italy, it was shown, at 37 months post-op, the mean crestal bone loss for implants with Laser-Lok microchannels was only 0.59mm versus 1.94mm for non Laser-Lok implants. The Laser-Lok treated implants formed a stable soft-tissue seal above the crestal bone.⁹



Colorized SEM showing human evidence of connective tissue attachment⁹

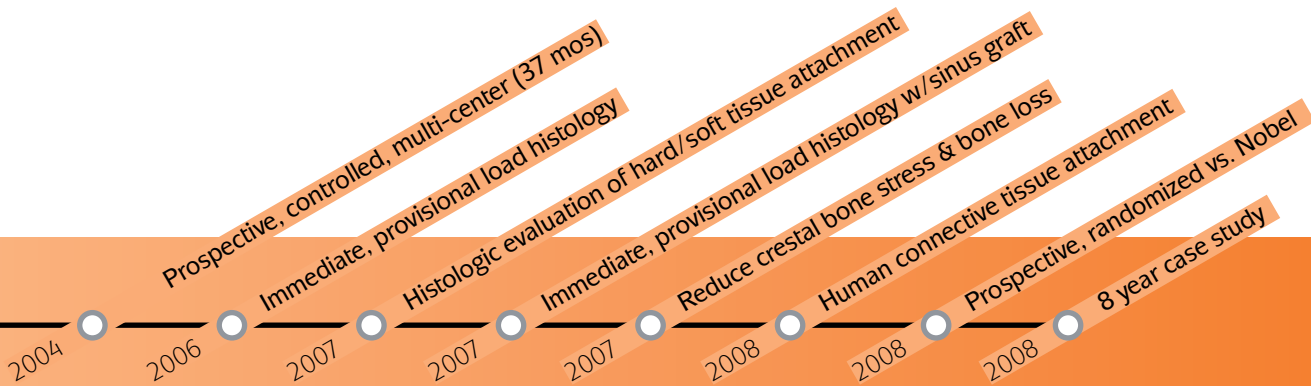


Bone levels maintained at 8 years post-restoration



Esthetics maintained at 8 years post-restoration

In another study, SEM analysis and human histology revealed Laser-Lok can produce connective tissue attachment which appears to be instrumental in preserving the alveolar bone crest and inhibiting apical migration of the epithelium.¹⁰ A prospective, double-blind case series was also conducted where two Laser-Lok implants and two Nobel Replace Select implants were placed in the anterior mandible of 15 patients. One of each type was loaded with an overdenture and one of each type remained unloaded. At one year, Laser-Lok implants had smaller pocket depths and improved crestal bone maintenance (both statistically significant) regardless of whether the implants were loaded or unloaded.¹¹



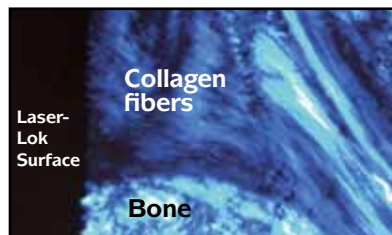
internal

Launched in 2004, the Internal implant quickly became BioHorizons' most popular implant design as many dentists shifted their preference towards internal connections. With the same basic shape and thread design as the External, the Internal leverages all of the External's science and research to assure clinicians achieve successful outcomes.

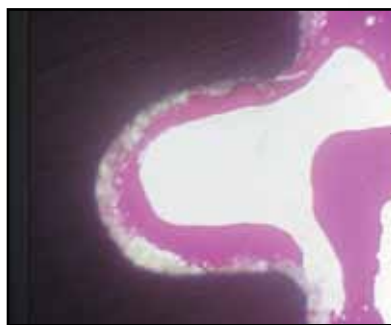
- Unique biomechanical thread design maximizes implant surface area¹²
- Most widely used internal connection in implant dentistry
- Laser-Lok collar[†] with RBT body
- 3 platform diameters: 3.5mm, 4.5mm & 5.7mm
- 4 lengths: 9mm, 10.5mm, 12mm, 15mm



Supported by a comprehensive line of internally hexed prosthetics.

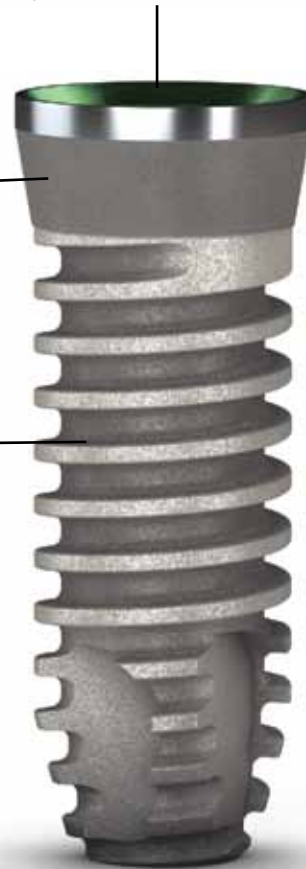


Laser-Lok zone shown to create functionally-oriented connective tissue attachment.



Biomechanical threadform designed for greater surface area and axial loading.

[†] Laser-Lok design patent #6,454,569 and 6,419,491



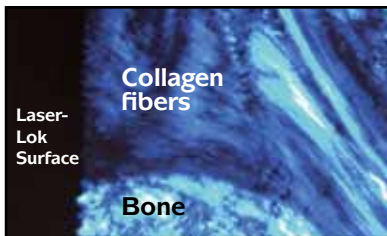
single-stage

The Single-stage implant exceeds the expectations of clinicians who have used other “soft-tissue level” implants. Unlike similar implants designs, the Single-stage implant features the BioHorizons power thread with its maximum surface area to support the high occlusal forces often seen in the posterior. This gives dentists confidence that their placements will remain secure long-term even with limited ridge height and poor bone quality.

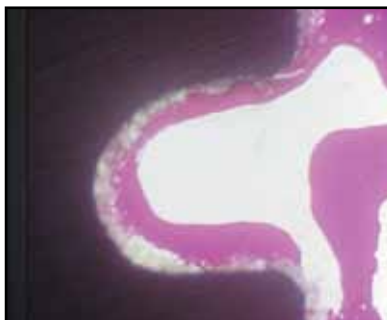
- Power thread provides up to 154% greater surface area¹²
- Laser-Lok collar[†] with RBT body
- 3 platform diameters: 3.5mm, 4.5mm & 5.7mm
- 5 lengths: 7mm, 9mm, 10.5mm, 12mm, 15mm



Greater flexibility than other “soft tissue” implants.



Laser-Lok zone shown to create functionally-oriented connective tissue attachment.



Biomechanical threadform designed for greater surface area and axial loading.



[†] Laser-Lok design patent #6,454,569 and 6,419,491

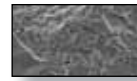
All Internal implants come packaged with a 3inOne abutment, surgical cover cap, and abutment screw.

Surface Treatment Configurations:

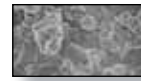
RBT with Laser-Lok




Resorbable Blast Texturing (RBT)



Hydroxylapatite (HA)



3.5mm Implants	Body Diameter x Length	RBT Surface with Laser-Lok	RBT Surface	HA Surface
			Ø3.5mm x 9mm	LPYR3509
	Ø3.5mm x 10.5mm	LPYR35105	PYR35105	PYH35105
	Ø3.5mm x 12mm	LPYR3512	PYR3512	PYH3512
	Ø3.5mm x 15mm	LPYR3515	PYR3515	PYH3515
4.0mm Implants	Body Diameter x Length	RBT Surface with Laser-Lok	RBT Surface	HA Surface
			Ø4.0mm x 9mm	LPGR4009
	Ø4.0mm x 10.5mm	LPGR40105	PGR40105	PGH40105
	Ø4.0mm x 12mm	LPGR4012	PGR4012	PGH4012
	Ø4.0mm x 15mm	LPGR4015	PGR4015	PGH4015
5.0mm Implants	Body Diameter x Length	RBT Surface with Laser-Lok	RBT Surface	HA Surface
			Ø5.0mm x 9mm	LPBR5009
	Ø5.0mm x 10.5mm	LPBR50105	PBR50105	PBH50105
	Ø5.0mm x 12mm	LPBR5012	PBR5012	PBH5012
	Ø5.0mm x 15mm	LPBR5015	PBR5015	PBH5015
6.0mm Implants	Body Diameter x Length	RBT Surface with Laser-Lok	RBT Surface	HA Surface
			Ø6.0mm x 9mm	LPBR6009
	Ø6.0mm x 10.5mm	LPBR60105	PBR60105	PBH60105
	Ø6.0mm x 12mm	LPBR6012	PBR6012	PBH6012
	Ø6.0mm x 15mm	LPBR6015	PBR6015	PBH6015

Not all products are available in all markets.

Surgical Cover Cap



- PYCC** 3.5mm Cover Cap
- PGCC** 4.5mm Cover Cap
- PBCC** 5.7mm Cover Cap

For use during submerged surgical healing. Hand-tighten with the .050" (1.25mm) Hex Driver. Titanium Alloy [Ti-6Al-4V]. A surgical cover cap is included with each implant but can also be ordered separately.

SINGLE-STAGE IMPLANTS

All Single-stage implants come packaged with a 2mm healing abutment.		Surface Treatment Configuration:	RBT with Laser-Lok	<i>RBT and HA only configurations available in limited quantities. Please call for availability.</i>	
				RBT surface treatment	HA surface treatment
3.5mm Implant Body 3.5mm Prosthetic Platform 	Ø3.5mm x 7mm, 3.5mm platform	LSYR3507	SYR3507	SYH3507	
	Ø3.5mm x 9mm, 3.5mm platform	LSYR3509	SYR3509	SYH3509	
	Ø3.5mm x 10.5mm, 3.5mm platform	LSYR35105	SYR35105	SYH35105	
	Ø3.5mm x 12mm, 3.5mm platform	LSYR3512	SYR3512	SYH3512	
	Ø3.5mm x 15mm, 3.5mm platform	LSYR3515	SYR3515	SYH3515	
4.0mm Implant Body 3.5mm Prosthetic Platform 	Ø4.0mm x 7mm, 3.5mm platform	LSYR4007	SYR4007	SYH4007	
	Ø4.0mm x 9mm, 3.5mm platform	LSYR4009	SYR4009	SYH4009	
	Ø4.0mm x 10.5mm, 3.5mm platform	LSYR40105	SYR40105	SYH40105	
	Ø4.0mm x 12mm, 3.5mm platform	LSYR4012	SYR4012	SYH4012	
	Ø4.0mm x 15mm, 3.5mm platform	LSYR4015	SYR4015	SYH4015	
4.0mm Implant Body 4.5mm Prosthetic Platform 	Ø4.0mm x 7mm, 4.5mm platform	LSGR4007	SGR4007	SGH4007	
	Ø4.0mm x 9mm, 4.5mm platform	LSGR4009	SGR4009	SGH4009	
	Ø4.0mm x 10.5mm, 4.5mm platform	LSGR40105	SGR40105	SGH40105	
	Ø4.0mm x 12mm, 4.5mm platform	LSGR4012	SGR4012	SGH4012	
	Ø4.0mm x 15mm, 4.5mm platform	LSGR4015	SGR4015	SGH4015	
5.0mm Implant Body 4.5mm Prosthetic Platform 	Ø5.0mm x 7mm, 4.5mm platform	LSGR5007	SGR5007	SGH5007	
	Ø5.0mm x 9mm, 4.5mm platform	LSGR5009	SGR5009	SGH5009	
	Ø5.0mm x 10.5mm, 4.5mm platform	LSGR50105	SGR50105	SGH50105	
	Ø5.0mm x 12mm, 4.5mm platform	LSGR5012	SGR5012	SGH5012	
	Ø5.0mm x 15mm, 4.5mm platform	LSGR5015	SGR5015	SGH5015	
5.0mm Implant Body 5.7mm Prosthetic Platform 	Ø5.0mm x 7mm, 5.7mm platform	LSBR5007	SBR5007	SBH5007	
	Ø5.0mm x 9mm, 5.7mm platform	LSBR5009	SBR5009	SBH5009	
	Ø5.0mm x 10.5mm, 5.7mm platform	LSBR50105	SBR50105	SBH50105	
	Ø5.0mm x 12mm, 5.7mm platform	LSBR5012	SBR5012	SBH5012	
	Ø5.0mm x 15mm, 5.7mm platform	LSBR5015	SBR5015	SBH5015	
6.0mm Implant Body 5.7mm Prosthetic Platform 	Ø6.0mm x 7mm, 5.7mm platform	LSBR6007	SBR6007	SBH6007	
	Ø6.0mm x 9mm, 5.7mm platform	LSBR6009	SBR6009	SBH6009	
	Ø6.0mm x 10.5mm, 5.7mm platform	LSBR60105	SBR60105	SBH60105	
	Ø6.0mm x 12mm, 5.7mm platform	LSBR6012	SBR6012	SBH6012	
	Ø6.0mm x 15mm, 5.7mm platform	LSBR6015	SBR6015	SBH6015	

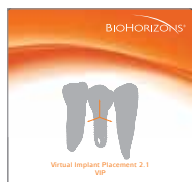
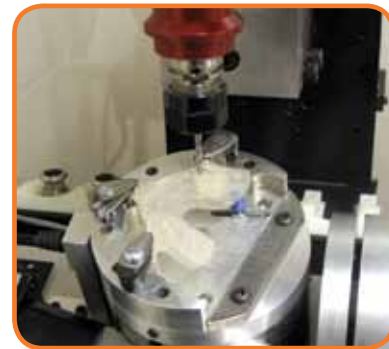
Virtual Implant Placement (VIP)

VIP treatment planning software was developed by a team of clinicians with the goal of providing a user friendly, virtual treatment planning solution that reduces clinical challenges and enhances postoperative outcomes both clinically and esthetically.

- Interactive 2D and 3D treatment planning
- Open platform implant compatibility
- Includes DICOM converter for immediate file conversion
- Practice building tool providing improved communication between clinician and patient
- Increased communication through VIP case viewer (download from BioHorizons website)



VIP virtual surgical plan transfers to Compu-Guide surgical template for implant position and orientation



VIP2.1 VIP 2.1 Software

Interactive 2D and 3D treatment planning software. Includes (2) software licenses.



L0303 VIP Catalog & Surgical Manual

SURGICAL INSTRUMENTS

Internal / Single-stage Surgical Kit

122-800

Internal / Single-stage Surgical Kit
Includes all instruments shown on pages 9-11 except where indicated.

SST

Internal / Single-stage Tray & Lid
without instruments



Individual Components



122-103
2.0mm Starter Drill



122-100
Drill Extender
(adds 16mm to length of drill)

- 122-12507** 2.5 x 7mm Depth Drill
- 122-12509** 2.5 x 9mm Depth Drill
- 122-125105** 2.5 x 10.5mm Depth Drill
- 122-12512** 2.5 x 12mm Depth Drill
- 122-12515** 2.5 x 15mm Depth Drill
- 122-225** 2.5mm Depth Drill (without Depth Stop)



- 122-230** 3.0mm Width Increasing Drill
- 122-232** 3.4mm Width Increasing Drill
- 122-237** 3.9mm Width Increasing Drill
- 122-242** 4.4mm Width Increasing Drill
- 122-247** 4.9mm Width Increasing Drill
- 122-252** 5.4mm Width Increasing Drill



Individual Components



- PT35** Internal / Single-stage 3.5mm Bone Tap
- PT40** Internal / Single-stage 4.0mm Bone Tap
- PT50** Internal / Single-stage 5.0mm Bone Tap
- PT60** Internal / Single-stage 6.0mm Bone Tap



- PCBD35** Internal 3.5mm Crestal Bone Drill
- PCBD40** Internal 4.0mm Crestal Bone Drill
- PCBD50** Internal 5.0mm Crestal Bone Drill
- PCBD60** Internal 6.0mm Crestal Bone Drill



- SYGIDR** 3.5/4.5mm Implant-level Driver, Ratchet*
- SBIDR** 5.7mm Implant-level Driver, Ratchet*



- SYGIDH** 3.5/4.5mm Implant-level Driver, Handpiece*
- SBIDH** 5.7mm Implant-level Driver, Handpiece*



- 144-100** Straight Parallel Pins (2 per kit)
- 144-200** 20° Angled Parallel Pins (2 per kit)



- PHA** Abutment-level Driver, Handpiece*
- PRA** Abutment-level Driver, Ratchet*

*instrument o-rings wear out over time. If an instrument is no longer held securely by its associated driver, order a replacement o-ring through Customer Care.
shop online at www.biohorizons.com

SURGICAL INSTRUMENTS

Individual Components



130-000
Ratchet



144-300
Implant Spacer / Depth Probe



135-351
.050" (1.25mm) Hex Driver



300-400
Hand Wrench*



300-206
4mm Square Drive Extender*
replaces 300-205 starting June 2010

Additional Kit Components



- SYCD35** Single-stage 3.5mm Counter-sink Drill, 3.5mm platform
- SYCD40** Single-stage 4.0mm Counter-sink Drill, 3.5mm platform
- SGCD40** Single-stage 4.0mm Counter-sink Drill, 4.5mm platform
- SGCD50** Single-stage 5.0mm Counter-sink Drill, 4.5mm platform
- SBCD50** Single-stage 5.0mm Counter-sink Drill, 5.7mm platform
- SBCD60** Single-stage 6.0mm Counter-sink Drill, 5.7mm platform

Sold separately; not included in the 122-800 surgical kit.



- SYSTA** Simple Solutions 3.5mm Surgical Trial Abutment (2 per kit)
- SGSTA** Simple Solutions 4.5mm Surgical Trial Abutment (2 per kit)
- SBSTA** Simple Solutions 5.7mm Surgical Trial Abutment (2 per kit)

Sold separately; not included in the 122-800 surgical kit.

*instrument o-rings wear out over time. If an instrument is no longer held securely by its associated driver, order a replacement o-ring through Customer Care.

Extended Shank Depth Drills with stops



- 122-403** 2.0mm Starter Drill, Extended Shank
- 122-42507** 2.5 x 7mm Depth Drill, Extended Shank
- 122-42509** 2.5 x 9mm Depth Drill, Extended Shank
- 122-425105** 2.5 x 10.5mm Depth Drill, Extended Shank
- 122-42512** 2.5 x 12mm Depth Drill, Extended Shank
- 122-42515** 2.5 x 15mm Depth Drill, Extended Shank
- 122-425** 2.5mm Depth Drill, Extended Shank

Extended Shank Drills have the same depth marks and cutting geometry as our standard drills, but add 8mm of length to the shank.

Extended Shank Drills



- 122-430** 3.0mm Width Increasing Drill, Extended Shank
- 122-432** 3.4mm Width Increasing Drill, Extended Shank
- 122-437** 3.9mm Width Increasing Drill, Extended Shank
- 122-442** 4.4mm Width Increasing Drill, Extended Shank
- 122-447** 4.9mm Width Increasing Drill, Extended Shank
- 122-452** 5.4mm Width Increasing Drill, Extended Shank

Extended Shank Drills have the same depth marks and cutting geometry as our standard drills, but add 8mm of length to the shank.

Burs



- 122-110** **Ø2.0mm Lindemann Bone Cutter**
Side-cutting drill used to correct eccentric osteotomy preparations.
- 122-106** **#6 Round Bur**

Handpiece Hex Drivers

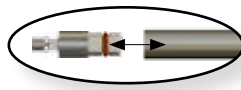


- 134-350** **.050" (1.25mm) Handpiece Hex Driver**
- 134-450** **.050" (1.25mm) Handpiece Hex Driver, Long**

For installation and removal of Cover Screws, Healing Abutments and Abutment Screws. The Handpiece Hex Drivers are used with latch-type contra-angle handpieces. The Handpiece Hex Driver, Long (134-450) is 5mm longer than the standard version (134-350).

ANCILLARY INSTRUMENTS

Surgical Driver



150-000 Surgical Driver

Used to drive implants into the osteotomy, particularly in the anterior region. The driver holds the Abutment-level Driver, Ratchet which interfaces with the *3inOne* Abutment. Also interfaces with the .050" (1.25mm) Hex Drivers as well as Bone Taps and the Implant-level Drivers, Ratchet.

Adjustable Torque Wrench

ATW ITL Precise Adjustable Torque Wrench

Ratchet design places both implants and abutments with 9 distinct torque settings (15, 20, 25, 30, 35, 40, 45, 50 and 60 Ncm). A simple twist of the handle locks in precision-engineered torque values and guarantees accuracy and repeatability.



Hex-chuck Abutment-level Driver

PADHH Internal Abutment-level Driver, Hex-chuck Handpiece*

Abutment-level Driver (alternative to PHA, page 10) with an integrated hex-chuck that when used with compatible W&H Hexagon Chucking System Handpieces (see page 17) prevents deformation of the ISO shank latch connection in high-torque applications.



Tissue Punches

PYTP 3.5mm Tissue Punch

PGTP 4.5mm Tissue Punch

PBTP 5.7mm Tissue Punch

Tissue Punches are used in a latch-type handpiece to remove the soft tissue from the crest of the ridge prior to osteotomy preparation in a flapless surgical procedure. Available in 3 platform diameters.



Bone Profiling Burs

PYBP 3.5mm Bone Profiling Bur & Guide

PGBP 4.5mm Bone Profiling Bur & Guide

PBBP 5.7mm Bone Profiling Bur & Guide

Used at implant uncover to contour crestal bone for abutments when the implant is subcrestal. For use in latch-type reduction handpieces. The Profiler's internal geometry matches the geometry of the included Profiler Guide. The Guide is screwed into the implant and then aligns the Profiler for precise removal of tissue surrounding the platform. Comes in three sizes corresponding to the three internal prosthetic platforms.

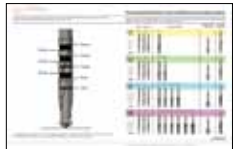


*instrument o-rings wear out over time. If an instrument is no longer held securely by its associated driver, order a replacement o-ring through Customer Care.

Related Literature



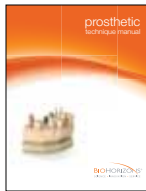
L0116 Internal & Single-stage Surgical Kit Wall Chart



L0117 Internal & Single-stage Depth Mark and Drill Sequence Chart



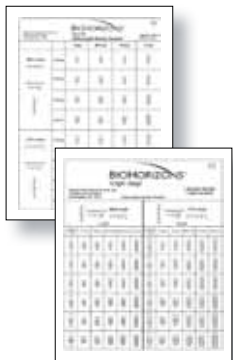
ML0117 Internal / Single-stage Surgical Manual



ML0118 Internal Prosthetic Technique Manual



ML0142 Simple Solutions Prosthetic Technique Manual



L0114 **Internal Radiographic Implant Template (overlay)**
 Designed to aid the clinician in the preoperative determination of options for implant length and diameter. The clear overlay template shows all sizes of BioHorizons Internal implants in 100% and 125% scale.

L0119 **Single-stage Radiographic Implant Template (overlay)**
 Designed to aid the clinician in the preoperative determination of options for implant length and diameter. The clear overlay template shows all sizes of BioHorizons Single-stage implants in 100% and 125% scale.

Patient Education Materials

- ML0103** **Patient Education – Tooth replacement with dental implants**
- ML0114** **Patient Education – Stabilizing dentures using dental implants**
- ML0129** **Patient Education – Rebuilding and maintaining bone**
- MLD101** **Patient Education – Soft tissue grafting with AlloDerm**



- ML0131** **Patient Education – Dental Implants - the tooth replacement solution**
 This high-quality flipbook helps the implant candidate understand the rationale and the advantages of implant therapy compared to traditional treatment methods. 9" x 6" (23cm x 16cm).



- P4XIM** **Internal 4x Patient Education Model**
 This 4-times scale model includes the Implant, Abutment, Abutment Screw, Ball-top Screw, Healing Abutment, Cover Cap, Implant Driver and Hex Driver. Excellent for demonstrating implant components to the patient.
 Call for availability.



- S4XIM** **Single-stage 4x Patient Education Model**
 This 4-times scale model includes the Implant, Simple Solutions Abutment, Abutment Screw, Healing Abutment, Healing Cap, Waxing Sleeves, Implant Driver and Hex Driver. Excellent for demonstrating implant components to the patient.
 Call for availability.

- MPSA** **Five Implant Acrylic Model**
 This life-sized model allows the clinician to illustrate implant placement of BioHorizons implants. Clear acrylic allows the implants to be viewed in relation to adjacent teeth. Call for availability.



- EP-MSLA** **Single-stage/Locator Patient Education Model**
 This life-sized model allows the clinician to illustrate a denture on an edentulous mandible supported by 2 implants with Locator abutments. Clear acrylic allows the implants to be viewed in relation to the denture. Call for availability.



- MOSM** **Overdenture Patient Education Model**
 Designed to aid the clinician in educating patients on the Overdenture System. Features four Overdenture implants in a clear acrylic mandible and a lower denture with the incorporated attachment housings.



- SAMPLE PG4012** **Sample Internal Implant**
- SAMPLE SG4012** **Sample Single-stage Implant**
 These sample implants are good for implant demonstrations and sawbones labs. These sample implants are fully anodized and are not for human use. Available in 4.0 x 12mm.



W&H ImplantMed 915

Maximum motor speed is 40,000 rpm. The kit includes the WI-75 E/KM 20:1 handpiece, bur testing gauge, (3) disposable irrigation assemblies, and service oil (shipped separately).



WH-915

W&H ImplantMed 915 Starter Kit

Re-order items:

WH-ITC915	WH-915 One-piece Disposable Irrigation Set (6 pack)
WH-915MC	ImplantMed 915 Motor Cable - 1.8 meter
WH-IC	Irrigation Clip for WI-75MB Handpiece

W&H ElcoMed SA-200

Maximum motor speed is 50,000 rpm. The SA-200 permits the storage of torque characteristics of a treatment stage, which can then be saved on a DOC card for archiving purposes. The kit includes the WS-75 20:1 handpiece, (10) disposable spray tubes, bur testing gauge, irrigation spike and service oil (shipped separately).



WH 200

W&H ElcoMed SA-200 Professional Kit

Re-order items:

WH-200PTWC	Pump Tube (190mm) with Connectors
WH-200RPT (3 PK)	Replacement Pump Tubes (190mm) (3 pack)
WH-200INI	INI Cards (3 pack)
WH-200DOC	DOC Cards (3 pack)
WH-200MC	ElcoMed 200 Motor Cable -1.8 meter

Universal and Legacy Re-order Items

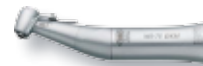
Ref. Code	Description	Motor Compatibility
WH-ST (10 PK)	Green Single-Use Spray Tubes (10 pack)	All W&H Motors
WH-CLP (10 PK)	Set of Spray Tube Clamps (10 pack)	ElcoMed 100 & 200
WH-100PTWC	Pump Tube with Connectors (65mm)	ElcoMed 100
WH-100RPT (5 PK)	Replacement Pump Tubes (65mm) (5 pack)	ElcoMed 100
WH-100MC	ElcoMed 100 Motor Cable -1.8 meter	ElcoMed 100
WH-110MC	ImplantMed 110 Motor Cable -1.8 meter	ImplantMed 110
WH-110CLP (5 PK)	Set of Spray Tube Clamps (5 pack)	ImplantMed 110 & 915
WH-110PTWC	Pump Tube (85mm) with Connectors	ImplantMed 110 & 915
WH-110RPT	Replacement Pump Tubes (85mm) (3 pack)	ImplantMed 110 & 915
WH-110ISAWRC	Irrigation Spike Assembly with Roller Clamp	ImplantMed 110 & 915
WH-110RC	Flow Regulating Roller Clamp	ImplantMed 110 & 915
WH-ISA	Irrigation Spike Assembly (autoclavable)	All W&H Motors
WH-ITWOS	Irrigation Tubing w/o Spike (autoclavable)	All W&H Motors
WH-MD400	MD-400 Service Oil-F1	All W&H Motors
WH-OSC	Oil Spray Cap	All W&H Motors
WH-SP	Sterilization Plug for Motor Cable	All W&H Motors

W&H ElcoMed Surgical Handpieces

WS-75

W&H 20:1 Contra-angle Handpiece WS-75 E/KM

Surgical Contra-angle 20:1 handpiece with Hexagon Chucking System and removable spray clip. Equipped with internal cooling system and external spray. Contra-angled shank for Ø2.35mm surgical burs and cutters. Can be completely dismantled for comprehensive hygiene.



WI-75MB

W&H 20:1 Contra-angle Handpiece WI-75 E/KM

Implantology Contra-angle 20:1 handpiece with Hexagon Chucking System and removable spray clip. Equipped with internal cooling system and external spray. Contra-angled shank for Ø2.35mm surgical burs and cutters.



WS-92

W&H 1:2.7 Contra-angle Speed Increasing Handpiece

Contra-angle 1:2.7 handpiece with external triple spray port. Friction-grip shank for Ø1.6mm surgical burs and cutters.



S-11

W&H 1:1 Straight Surgical Handpiece

Straight Surgical 1:1 handpiece with external spray and lever chuck (drive speed max. 30,000 rpm). Uses Ø2.35mm, 45mm long surgical burs and cutters.



S-12

W&H 1:2 Contra-angle Surgical Handpiece, slim

Contra-angle 1:2 handpiece with external spray and lever chuck (drive speed max. 40,000 rpm). Uses Ø2.35mm, 70mm long surgical burs and cutters.



Bur Testing Gauge

WH-BTG

Bur Testing Gauge

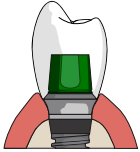
Used to verify the condition of latch-type burs. Burs in proper condition will fit into larger diameter hole, but will not fit into the smaller hole (marked red). Burs that fail either of these criteria are unfit for use, and may cause damage to the handpiece if used.



IMPORTANT NOTE: W&H motors and handpieces are distinguished by their precision craftsmanship and reliability and are covered by a 1-year manufacturer's warranty. Instructions for required cleaning and maintenance are outlined in each product's user manual, and adherence to these procedures is essential for proper function and longevity of the products. BioHorizons assumes no liability for the failure of, or damage to, motors and handpieces that are not properly maintained or used contrary to the instructions for use. Please contact your Product Support Specialist or Customer Care if you need additional information.

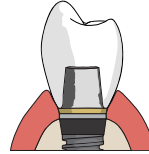
IMPLANT-LEVEL FIXED PROSTHETICS OVERVIEW

Simple Solutions Cement-retained



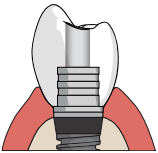
Simple Solutions Abutments
Internal - page 28
Single-stage - page 36

Cement-retained



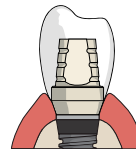
Abutments
Internal - pages 22-23
Single-stage - page 36

Custom fabricated abutments



Titanium Base for Custom Milled Abutments
 & Custom Castable Abutments
Internal - page 24
Single-stage - page 36

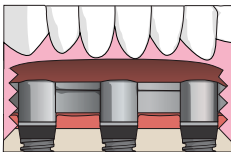
Provisional Restorations



Temporary Abutments
Internal & Single-stage
page 25

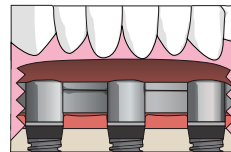
REMOVABLE AND HYBRID PROSTHETICS OVERVIEW

Implant-level Cast Bar or Hybrid (Fixed-detachable)



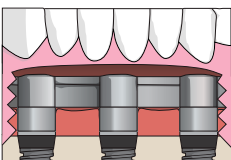
Custom Castable Abutments,
 Non-hexed
Internal - page 24
Single-stage - page 36

Implant-level Laser Welded Bar



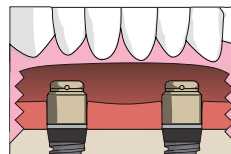
Direct Pick-up Coping, Non-hexed
 Titanium Abutment for Laser Weld
Internal - page 27
Single-stage - page 36

Abutment for Screw level Cast Bar or Hybrid (Fixed-detachable)



Abutments for Screw
Internal & Single-stage
pages 34-35

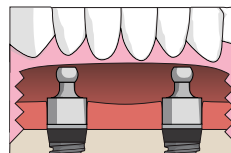
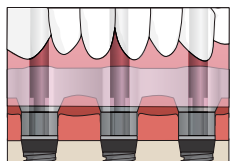
Abutment-retained Overdenture, Tissue-supported



Locator Abutments
Internal & Single-stage
pages 30-31

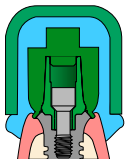


Ball Abutments
Internal & Single-stage
pages 32-33



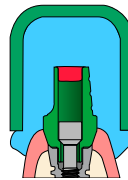
IMPRESSION COMPONENTS FOR IMPLANT-LEVEL RESTORATIONS

Simple Solutions SnapCap Pick-up



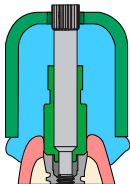
Simple Solutions Components
Internal - page 21
Single-stage - page 21

Implant-level Closed-tray Transfer



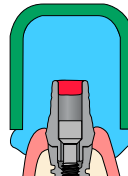
Indirect Transfer Copings
Internal - page 26

Implant-level Open-tray Pick-up



Direct Pick-up Copings
Internal - pages 26-27
Single-stage - page 37

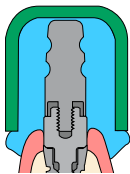
Direct Abutment Impression (Crown & Bridge-type)



Abutments for cement-retention
Internal - pages 22-23
Single-stage - page 36

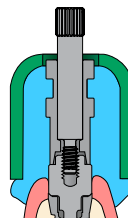
IMPRESSION COMPONENTS FOR ABUTMENT-LEVEL RESTORATIONS

Abutment for Screw-level Closed-tray Transfer



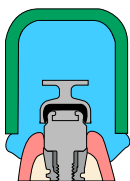
Abutment for Screw-level Indirect
 Transfer Copings
Internal & Single-stage
page 35

Abutment for Screw-level Open-tray Pick-up



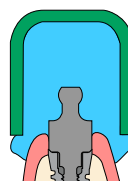
Abutment for Screw-level Direct
 Pick-up Copings
Internal & Single-stage
page 35

Locator Abutment Closed-tray Pick-up



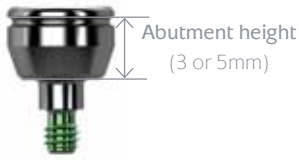
Locator Components
Internal & Single-stage
pages 30-31

Ball Abutment Closed-tray Transfer



Ball Abutment Components
Internal & Single-stage
pages 32-33

Internal Regular Emergence Healing Abutments

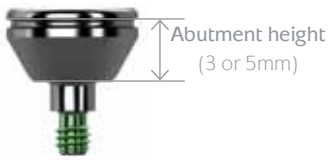


Platform diameter	Abutment diameter
3.5mm	4.5mm
4.5mm	5.5mm
5.7mm	6.6mm

Prosthetic platform	3mm high	5mm high
3.5mm Regular Healing Abutment	PYRHA3	PYRHA5
4.5mm Regular Healing Abutment	PGRHA3	PGRHA5
5.7mm Regular Healing Abutment	PBRHA3	PBRHA5

Hand-tighten with the .050" (1.25mm) Hex Driver. Titanium Alloy [Ti-6Al-4V]. Encoded for easy intraoral identification; for example: **GR3**: Green (4.5mm) platform / Regular Emerg. / 3mm High.

Internal Wide Emergence Healing Abutments

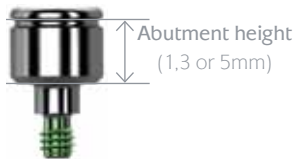


Platform diameter	Abutment diameter
3.5mm	5.8mm
4.5mm	6.8mm

Prosthetic platform	3mm high	5mm high
3.5mm Wide Healing Abutment	PYWHA3	PYWHA5
4.5mm Wide Healing Abutment	PGWHA3	PGWHA5

Hand-tighten with the .050" (1.25mm) Hex Driver. Titanium Alloy [Ti-6Al-4V]. Encoded for easy intraoral identification; for example: **GW3**: Green (4.5mm) platform / Wide Emerg. / 3mm High.

Internal Narrow Emergence Healing Abutments

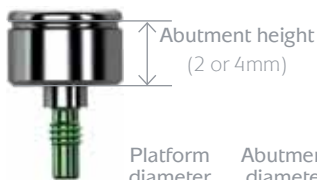


Platform diameter	Abutment diameter
3.5mm	3.8mm
4.5mm	4.7mm
5.7mm	5.9mm

Prosthetic platform	1mm high	3mm high	5mm high
3.5mm Narrow Healing Abutment	PYNHA1	PYNHA3	PYNHA5
4.5mm Narrow Healing Abutment	PGNHA1	PGNHA3	PGNHA5
5.7mm Narrow Healing Abutment	PBNHA1	PBNHA3	PBNHA5

Hand-tighten with the .050" (1.25mm) Hex Driver. Titanium Alloy [Ti-6Al-4V]. Encoded for easy intraoral identification; for example: **GN3**: Green (4.5mm) platform / Narrow Emerg. / 3mm High.

Single-stage Healing Abutments



Platform diameter	Abutment diameter
3.5mm	5.1mm
4.5mm	6.1mm
5.7mm	7.3mm

Prosthetic platform	2mm high	4mm high
Single-stage 3.5mm Healing Abutment	SYHA20	SYHA40
Single-stage 4.5mm Healing Abutment	SGHA20	SGHA40
Single-stage 5.7mm Healing Abutment	SBHA20	SBHA40

Hand-tighten with the .050" (1.25mm) Hex Driver. Titanium Alloy [Ti-6Al-4V]. Can be used to contour tissue for Simple Solutions abutments. A 2mm Healing Abutment is packaged with each Single-stage implant. Encoded for easy intraoral identification; for example: **SG2**: Green (4.5mm) platform / 2mm High.

Simple Solutions Restorative Kits

Simple Solutions™

Simple Solutions restorative protocols for Internal & Single-stage implants allow clinicians to provide their patients with cement-retained restorations in a minimal number of office visits. The pre-tapered abutments are designed to be restored without additional preparation. After the impression has been made, patients can wear a tooth-colored Healing Cap over the abutment while the laboratory fabricates the final prosthesis. Acrylic can be added to the Healing Cap as needed to help create a more natural-appearing provisional. Please refer to the Simple Solutions Prosthetic Technique Manual (ref. ML0142) for detailed Instructions for Use.



Simple Solutions Kit Includes: Abutment, Abutment Screw, Healing Cap, Impression Cap, Waxing Sleeve for Crown, Waxing Sleeve for Bridge and Replica. Individual components available for order on pages 28-29.

Prosthetic platform / Abutment height	0.8mm collar	1.8mm collar	2.8mm collar
Internal 3.5mm Kit, 4.0mm Height	K-PY4008	K-PY4018	K-PY4028
Internal 3.5mm Kit, 5.5mm Height	K-PY5508	K-PY5518	K-PY5528
Internal 4.5mm Kit, 4.0mm Height	K-PG4008	K-PG4018	K-PG4028
Internal 4.5mm Kit, 5.5mm Height	K-PG5508	K-PG5518	K-PG5528
Internal 5.7mm Kit, 4.0mm Height	K-PB4008	K-PB4018	K-PB4028
Internal 5.7mm Kit, 5.5mm Height	K-PB5508	K-PB5518	K-PB5528
Single-stage 3.5mm, 4.0mm Height		K-SY40	
Single-stage 3.5mm, 5.5mm Height		K-SY55	
Single-stage 4.5mm, 4.0mm Height		K-SG40	
Single-stage 4.5mm, 5.5mm Height		K-SG55	
Single-stage 5.7mm, 4.0mm Height		K-SB40	
Single-stage 5.7mm, 5.5mm Height		K-SB55	



Order Simple Solutions Restorative Kits by prosthetic platform, abutment height and collar height.

Internal Simple Solutions Healing Abutments

Prosthetic platform	0.8mm collar	1.8mm collar	2.8mm collar
3.5mm Healing Abutment	SPYHA08	SPYHA18	SPYHA28
4.5mm Healing Abutment	SPGHA08	SPGHA18	SPGHA28
5.7mm Healing Abutment	SPBHA08	SPBHA18	SPBHA28



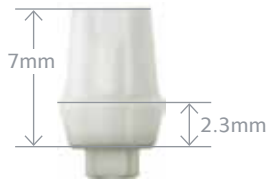
Collar height
(0.8, 1.8 or 2.8mm)

Order Simple Solutions Healing Abutment to match the appropriate emergence and diameter of the Simple Solutions Abutment. Hand-tighten with a .050" (1.25mm) Hex Driver. Titanium Alloy [Ti-6Al-4V]. Encoded for easy intraoral identification; for example:

GS1.8: Green (4.5mm) platform / Simp. Sol. / 1.8mm collar

Platform diameter	Abutment diameter
3.5mm	5.0mm
4.5mm	6.0mm
5.7mm	7.1mm

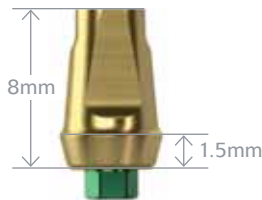
Ceramic Abutments for Cement-retained Restorations



- PYRCA** 3.5mm Ceramic Abutment (Regular Emergence)
- PGRCA** 4.5mm Ceramic Abutment (Regular Emergence)
- PBRCA** 5.7mm Ceramic Abutment (Regular Emergence)

Used to fabricate cement-retained, single- or multiple-unit prostheses. Packaged with Abutment Screw (PXAS). Yttria-stabilized Zirconia. Final torque: 30Ncm.

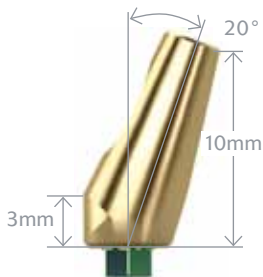
3inOne Abutments for Cement-retained Restorations



- PYREA** 3.5mm 3inOne Abutment (Regular Emergence)
- PGREA** 4.5mm 3inOne Abutment (Regular Emergence)
- PBREA** 5.7mm 3inOne Abutment (Regular Emergence)

Used to fabricate cement-retained, single- or multiple-unit prostheses. Also used with Ball-top Screw as a closed-tray, hexed-timed impression coping. Packaged with Abutment Screw (PXAS). Titanium Alloy [Ti-6Al-4V]. TiN coated. Final torque: 30Ncm.

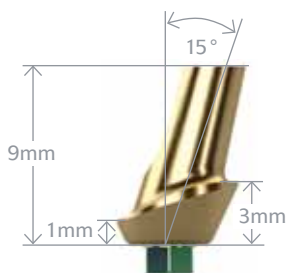
Angled Abutments for Cement-retained Restorations



- PYRAA** 3.5mm Angled Abutment (Regular Emergence)
- PGRAA** 4.5mm Angled Abutment (Regular Emergence)
- PBRAA** 5.7mm Angled Abutment (Regular Emergence)

Used to fabricate cement-retained, single- or multiple-unit prostheses. Packaged with Abutment Screw (PXAS). Titanium Alloy [Ti-6Al-4V]. TiN coated. Final torque: 30Ncm.

Angled Esthetic Abutments for Cement-retained Restorations



- PYAEA** 3.5mm Angled Esthetic Abutment (Wide Emergence)
- PGAEA** 4.5mm Angled Esthetic Abutment (Wide Emergence)
- PBAEA** 5.7mm Angled Esthetic Abutment (Regular Emergence)

Used to fabricate cement-retained, single- or multiple-unit prostheses. Packaged with Abutment Screw (PXAS). Titanium Alloy [Ti-6Al-4V]. TiN coated. Final torque: 30Ncm.

INDIVIDUAL INTERNAL ABUTMENTS

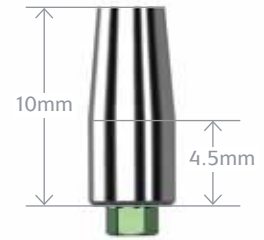
Narrow Abutments for Cement-retained Restorations

PYNEA 3.5mm Narrow Emergence Abutment

PGNEA 4.5mm Narrow Emergence Abutment

PBNEA 5.7mm Narrow Emergence Abutment

Used to fabricate cement-retained, single- or multiple-unit prostheses. Packaged with Abutment Screw (PXAS). Titanium Alloy [Ti-6Al-4V]. Final torque: 30Ncm.



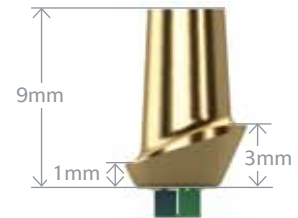
Esthetic Abutments for Cement-retained Restorations

PYSEA 3.5mm Straight Esthetic Abutment (Wide Emergence)

PGSEA 4.5mm Straight Esthetic Abutment (Wide Emergence)

PBSEA 5.7mm Straight Esthetic Abutment (Regular Emergence)

Used to fabricate cement-retained, single- or multiple-unit prostheses. Packaged with Abutment Screw (PXAS). Titanium Alloy [Ti-6Al-4V]. TiN coated. Final torque: 30Ncm.



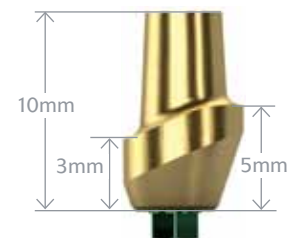
Esthetic Abutments for Cement-retained Restorations (3mm buccal height)

PYSEA3 3.5mm Straight Esthetic Abutment, 3mm buccal (Wide Emergence)

PGSEA3 4.5mm Straight Esthetic Abutment, 3mm buccal (Wide Emergence)

PBSEA3 5.7mm Straight Esthetic Abutment, 3mm buccal (Regular Emergence)

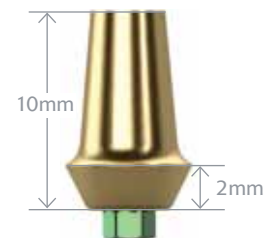
Used to fabricate cement-retained, single- or multiple-unit prostheses when a deep gingival sulcus is present. Packaged with Abutment Screw (PXAS). Titanium Alloy [Ti-6Al-4V]. TiN coated. Final torque: 30Ncm. Call for availability.



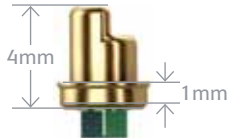
Profile Abutments for Cement-retained Restorations

PGWEA 4.5mm Wide Emergence Profile Abutment

Used to fabricate cement-retained, single- or multiple-unit prostheses. Packaged with Abutment Screw (PXAS). Titanium Alloy [Ti-6Al-4V]. TiN coated. Final torque: 30Ncm.



Titanium Base for Custom Milled Abutments



- PYTB** 3.5mm Titanium Base for Custom Milled Abutment
- PGTB** 4.5mm Titanium Base for Custom Milled Abutment
- PBTB** 5.7mm Titanium Base for Custom Milled Abutment

Used as a titanium base when fabricating custom-milled CAD/CAM zirconia abutments for cement-retained single and multi-unit prostheses. Packaged with the Abutment Screw (PXAS). Titanium Alloy [Ti-6Al-4V]. TiN coated. Final torque: 30Ncm. Call for availability of titanium base and associated plastic sleeve.

Custom Castable (UCLA) Abutments - Hexed



- PYCAH** 3.5mm Custom Cast Abutment, Hexed
- PGCAH** 4.5mm Custom Cast Abutment, Hexed
- PBCAH** 5.7mm Custom Cast Abutment, Hexed

Used for single-unit screw-retained or custom abutment cement-retained restorations. Packaged with the Abutment Screw (PXAS). Gold Alloy base with natural acetyl (Delrin® or Pomalux®) sleeve. Final torque: 30Ncm.

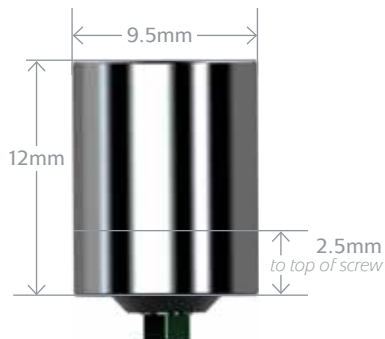
Custom Castable (UCLA) Abutments - Non-hexed



- PYCAN** 3.5mm Custom Cast Abutment, Non-hexed
- PGCAN** 4.5mm Custom Cast Abutment, Non-hexed
- PBCAN** 5.7mm Custom Cast Abutment, Non-hexed

Used for multiple-unit, screw-retained restorations. Packaged with the Abutment Screw (PXAS). Gold Alloy base with natural acetyl (Delrin® or Pomalux®) sleeve. Final torque: 30Ncm.

Bulk Preparation Abutment for Cement-retained Restorations



- PYBPA** 3.5mm Bulk Preparation Abutment
- PGBPA** 4.5mm Bulk Preparation Abutment
- PBBPA** 5.7mm Bulk Preparation Abutment

Used to fabricate custom abutments for cement-retained, single- or multiple-unit prostheses. Packaged with Abutment Screw (PXAS). Titanium Alloy [Ti-6Al-4V]. Final torque: 30Ncm. Call for availability.

INDIVIDUAL INTERNAL ABUTMENTS

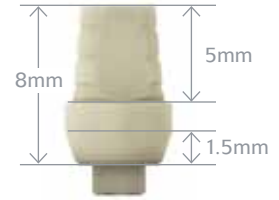
PEEK® Temporary Abutments

PYRTA 3.5mm Plastic Temporary Abutment (Regular Emergence)

PGRTA 4.5mm Plastic Temporary Abutment (Regular Emergence)

PBRTA 5.7mm Plastic Temporary Abutment (Regular Emergence)

For fabrication of cement- or screw-retained provisional restorations (up to 30 days). A Direct Coping Screw (PXDCS, purchased separately) may be used to maintain screw access hole during fabrication of screw-retained provisional prostheses. Packaged with Abutment Screw (PXAS). PEEK® (PolyEtherEtherKetone). Final torque: 30Ncm.



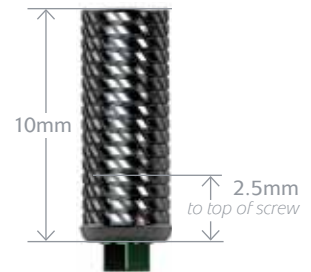
Titanium Temporary Abutments - Hexed

PYTTH 3.5mm Titanium Temporary Abutment, Hexed

PGTTH 4.5mm Titanium Temporary Abutment, Hexed

PBTTH 5.7mm Titanium Temporary Abutment, Hexed

Used for single-unit screw-retained, long term temporary restorations (>30 days). Packaged with the Abutment Screw (PXAS). Titanium Alloy [Ti-6Al-4V]. Final torque: 30Ncm.



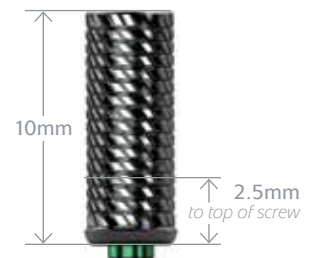
Titanium Temporary Abutments - Non-hexed

PYT TN 3.5mm Titanium Temporary Abutment, Non-hexed

PGT TN 4.5mm Titanium Temporary Abutment, Non-hexed

PBT TN 5.7mm Titanium Temporary Abutment, Non-hexed

Used for multiple-unit, screw-retained, long term temporary restorations (>30 days). Packaged with the Abutment Screw (PXAS). Titanium Alloy [Ti-6Al-4V]. Final torque: 30Ncm.



Ball-top Screw for Indirect Transfer

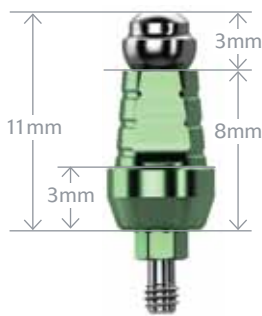


PXBT

Ball-top Screw for Indirect Transfer

Fits all prosthetic platforms. Used with the *3inOne* Abutment to form an impression coping for closed-tray, hexed-timed transfers. May be used to increase height of Indirect Transfer Copings by 3mm. Hand-tighten. Titanium Alloy [Ti-6Al-4V].

Indirect Transfer Copings (Closed Tray)



Ball-top Screw (PXBT) pictured above sold separately

PYNIC

3.5mm Narrow Indirect Transfer Coping

PYRIC

3.5mm Regular Indirect Transfer Coping

PYWIC

3.5mm Wide Indirect Transfer Coping

PGNIC

4.5mm Narrow Indirect Transfer Coping

PGRIC

4.5mm Regular Indirect Transfer Coping

PGWIC

4.5mm Wide Indirect Transfer Coping

PBNIC

5.7mm Narrow Indirect Transfer Coping

PBRIC

5.7mm Regular Indirect Transfer Coping

Used to make a closed-tray, implant-level, hexed-timed impression. Packaged with the Abutment Screw (PXAS). Titanium Alloy [Ti-6Al-4V].



PYNISC

3.5mm Narrow Indirect Scoop Coping

PGNISC

4.5mm Narrow Indirect Scoop Coping

PBNISC

5.7mm Narrow Indirect Scoop Coping

Used to make a closed-tray, implant-level, hexed-timed impression. Pre-assembled with a Coping Screw (PXSS). Titanium Alloy [Ti-6Al-4V]. Call for availability.

Implant Analogs



PYIA

3.5mm Implant Analog

PGIA

4.5mm Implant Analog

PBIA

5.7mm Implant Analog

Represents the implant in a laboratory-fabricated, implant-level stone model. Not intended for use with Simple Solutions components. Titanium Alloy [Ti-6Al-4V].

INTERNAL IMPRESSION COMPONENTS

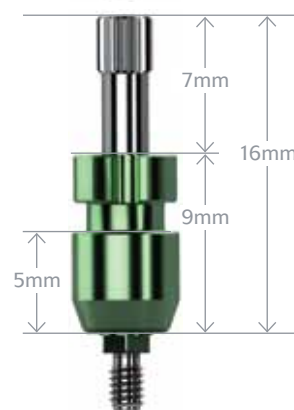
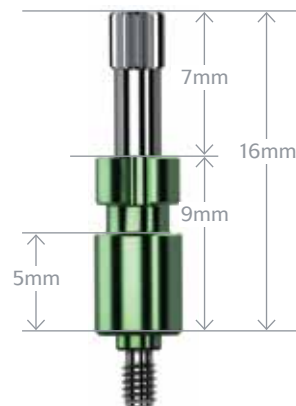
- PYNDC** 3.5mm Narrow Direct Pick-up Coping, Hexed
- PYRDC** 3.5mm Regular Direct Pick-up Coping, Hexed
- PYWDC** 3.5mm Wide Direct Pick-up Coping, Hexed
- PGNDC** 4.5mm Narrow Direct Pick-up Coping, Hexed
- PGRDC** 4.5mm Regular Direct Pick-up Coping, Hexed
- PGWDC** 4.5mm Wide Direct Pick-up Coping, Hexed
- PBNDC** 5.7mm Narrow Direct Pick-up Coping, Hexed
- PBRDC** 5.7mm Regular Direct Pick-up Coping, Hexed

Used to make an open-tray, implant-level, hexed-timed impression. Packaged with the Direct Coping Screw (PXDCS). Titanium Alloy [Ti-6Al-4V]. Hand-tighten.

- PYNDCN** 3.5mm Narrow Direct Pick-up Coping, Non-hexed
- PGNDCN** 4.5mm Narrow Direct Pick-up Coping, Non-hexed
- PBNDCN** 5.7mm Narrow Direct Pick-up Coping, Non-hexed

Used to make an open-tray, implant-level, non-hexed impression. Packaged with the extended Direct Coping Screw (PXDCS). May also be used to fabricate multiple-unit laser welded bars; see the Internal Prosthetic Technique Manual (ref. ML0118) for additional information. Titanium Alloy [Ti-6Al-4V]. Hand-tighten.

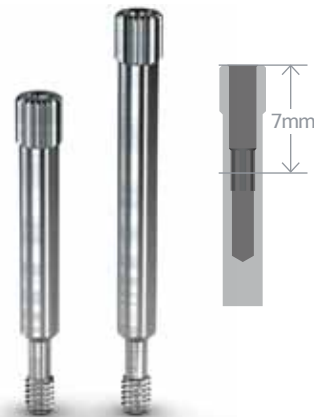
Direct Pick-up Copings (Open Tray)



Direct Coping Screws

- PXDCS** Direct Coping Screw
- PXDCSL** Direct Coping Screw, Long

Fits all implant prosthetic platforms. The PXDCS is packaged with all Direct Pick-up Copings. May also be used in place of the Abutment Screw (PXAS) when extra length is needed, or to maintain the screw access hole during fabrication of screw-retained provisional prostheses. Up to 7mm can be removed from the screw without losing the hex engagement. Utilizes the .050" (1.25mm) Hex Driver. Hand-tighten or torque to 30 Ncm depending on application. Titanium Alloy [Ti-6Al-4V]. PXDCSL adds 5mm length compared to the PXDCS.



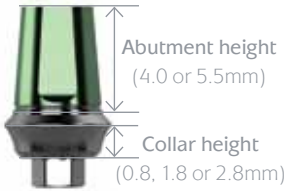
Abutment Screw

- PXAS** Abutment Screw

Fits all implant prosthetic platforms. Low profile screw head. Packaged with all two-piece abutments. Utilizes the .050" (1.25mm) Hex Driver. Final torque: 30 Ncm. Titanium Alloy [Ti-6Al-4V].



Internal Simple Solutions Abutments



Prosthetic platform / Abutment height	0.8mm collar	1.8mm collar	2.8mm collar
3.5mm Abutment, 4.0mm	SPY4008	SPY4018	SPY4028
3.5mm Abutment, 5.5mm	SPY5508	SPY5518	SPY5528
4.5mm Abutment, 4.0mm	SPG4008	SPG4018	SPG4028
4.5mm Abutment, 5.5mm	SPG5508	SPG5518	SPG5528
5.7mm Abutment, 4.0mm	SPB4008	SPB4018	SPB4028
5.7mm Abutment, 5.5mm	SPB5508	SPB5518	SPB5528

Internal Simple Solutions crowns finish on the restorative shoulder of the abutment. There are three options for transmucosal collar height: 0.8mm / 1.8mm / 2.8mm. Select the collar height that positions the restorative shoulder as close as possible to the desired position of the crown margin. Packaged with Abutment Screw (PXAS). Titanium Alloy [Ti-6Al-4V]. Final torque: 30Ncm.

Simple Solutions Healing Caps



SYPHC40	Simple Solutions 3.5mm Healing Cap, 4.0mm
SYPHC55	Simple Solutions 3.5mm Healing Cap, 5.5mm
SGPHC40	Simple Solutions 4.5mm Healing Cap, 4.0mm
SGPHC55	Simple Solutions 4.5mm Healing Cap, 5.5mm
SBPHC40	Simple Solutions 5.7mm Healing Cap, 4.0mm
SBPHC55	Simple Solutions 5.7mm Healing Cap, 5.5mm

Used as-is or as a coping for fabrication of provisional restorations (up to 30 days). Secure with temporary cement. Order by platform diameter and abutment height. PEEK® (PolyEtherEtherKetone).

Simple Solutions Impression Caps



SYPIC40	Simple Solutions 3.5mm Impression Cap, 4.0mm
SYPIC55	Simple Solutions 3.5mm Impression Cap, 5.5mm
SGPIC40	Simple Solutions 4.5mm Impression Cap, 4.0mm
SGPIC55	Simple Solutions 4.5mm Impression Cap, 5.5mm
SBPIC40	Simple Solutions 5.7mm Impression Cap, 4.0mm
SBPIC55	Simple Solutions 5.7mm Impression Cap, 5.5mm

Order by platform diameter and abutment height.

Simple Solutions Replicas



SYR40	Simple Solutions 3.5mm Replica, 4.0mm
SYR55	Simple Solutions 3.5mm Replica, 5.5mm
SGR40	Simple Solutions 4.5mm Replica, 4.0mm
SGR55	Simple Solutions 4.5mm Replica, 5.5mm
SBR40	Simple Solutions 5.7mm Replica, 4.0mm
SBR55	Simple Solutions 5.7mm Replica, 5.5mm

Order by platform diameter and abutment height. Titanium Alloy [Ti-6Al-4V].

SIMPLE SOLUTIONS INDIVIDUAL COMPONENTS

Simple Solutions Waxing Sleeves

- SYPWSC** Simple Solutions 3.5mm Waxing Sleeve, Crown *(single unit)*
- SGPWSC** Simple Solutions 4.5mm Waxing Sleeve, Crown *(single unit)*
- SBPWSC** Simple Solutions 5.7mm Waxing Sleeve, Crown *(single unit)*



- SYPWSB** Simple Solutions 3.5mm Waxing Sleeve, Bridge *(multiple units)*
- SGPWSB** Simple Solutions 4.5mm Waxing Sleeve, Bridge *(multiple units)*
- SBPWSB** Simple Solutions 5.7mm Waxing Sleeve, Bridge *(multiple units)*



The Waxing Sleeve for Crown has internal anti-rotation flats to engage the abutment/replica flats. The Waxing Sleeve for Bridge has no anti-rotational feature and may only be used for multiple units. Order by platform diameter. Trim for height. Burn-out plastic.

Simple Solutions Replica Lab Tools

- SYRLT** Simple Solutions 3.5mm Replica Lab Tool
- SGRLT** Simple Solutions 4.5mm Replica Lab Tool
- SBRLT** Simple Solutions 5.7mm Replica Lab Tool



Used to create burn-out copings without use of the Waxing Sleeves. The double-ended tools (4.0mm / 5.5mm abutment height) mimic the geometry of Simple Solutions Replicas including the anti-rotation flats, but WITHOUT the retentive snap feature. Castings made from copings fabricated on the Replica Lab Tools do not require use of the Casting Reamers (below).

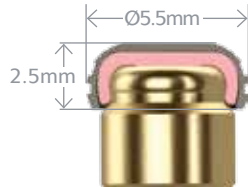
Simple Solutions Casting Reamers

- SYCR** Simple Solutions 3.5mm Casting Reamer
- SGCR** Simple Solutions 4.5mm Casting Reamer
- SBCR** Simple Solutions 5.7mm Casting Reamer



Used to remove the snap feature from metal castings fabricated with Simple Solutions Waxing Sleeves. **Do not use on non-precious alloys.** Order by platform diameter.

Locator® Abutments



PYLA0	3.5mm Locator Abutment, 0mm Cuff Height
PYLA1	3.5mm Locator Abutment, 1.0mm Cuff Height
PYLA2	3.5mm Locator Abutment, 2.0mm Cuff Height
PYLA3	3.5mm Locator Abutment, 3.0mm Cuff Height
PYLA4	3.5mm Locator Abutment, 4.0mm Cuff Height
PYLA5	3.5mm Locator Abutment, 5.0mm Cuff Height
PYLA6	3.5mm Locator Abutment, 6.0mm Cuff Height
PGLA0	4.5mm Locator Abutment, 0mm Cuff Height
PGLA1	4.5mm Locator Abutment, 1.0mm Cuff Height
PGLA2	4.5mm Locator Abutment, 2.0mm Cuff Height
PGLA3	4.5mm Locator Abutment, 3.0mm Cuff Height
PGLA4	4.5mm Locator Abutment, 4.0mm Cuff Height
PGLA5	4.5mm Locator Abutment, 5.0mm Cuff Height
PGLA6	4.5mm Locator Abutment, 6.0mm Cuff Height
PBLA1	5.7mm Locator Abutment, 1.0mm Cuff Height
PBLA2	5.7mm Locator Abutment, 2.0mm Cuff Height
PBLA3	5.7mm Locator Abutment, 3.0mm Cuff Height
PBLA4	5.7mm Locator Abutment, 4.0mm Cuff Height
PBLA5	5.7mm Locator Abutment, 5.0mm Cuff Height
PBLA6	5.7mm Locator Abutment, 6.0mm Cuff Height

The Locator Implant Attachment System is designed for use with overdentures or partial dentures retained in whole or in part by dental implants in the mandible or maxilla. Order by Cuff Height to match the height of the gingival tissue. The abutment will extend above the tissue by 1.5mm to allow the Locator Male to seat completely. Order one Locator Male Processing Set for each Locator Abutment (sold in packs of 2 or 10). Locator Abutments are made from Titanium Alloy [Ti-6Al-4V]. Final torque: 30 Ncm.

The Male Processing Package provides 3 choices of retention (see opposite page). The Replacement Males (clear, pink and blue) are used to restore implants with up to 10° of divergence (20° between implants). The Extended Range Replacement Males (green and red) accommodate divergences from 10° and 20° (40° between implants), and may be purchased separately.

Locator Components

LCT



Locator Core Tool

Multi-purpose tool serves as hand driver for seating Locator Abutments onto the implants, seating tool for nylon male inserts and insert removal tool.

LMPP-2



Locator Male Processing Package (2 pack)

Includes: (2) Denture Caps with (2) Black Processing Males; (2) White Block-out Spacers; (2) Clear, (2) Pink and (2) Blue Nylon Males.

LMPP-10

Locator Male Processing Package (10 pack)

Includes: (10) Denture Caps with (10) Black Processing Males; (10) White Block-out Spacers; (10) Clear, (10) Pink and (10) Blue Nylon Males.

LOCATOR ABUTMENT COMPONENTS

Locator Impression Coping

LIC **Locator Impression Coping (4 pack)**



Locator Female Analog

LFA-4MM **Locator Female Analog Ø4mm (4 pack)**
Used for 3.5/4.5 platform

LFA-5MM **Locator Female Analog Ø5mm (4 pack)**
Used for 5.7 platform



Locator Male Replacements

LRM-C **Locator Replacement Male (clear) (4 pack)**
Retention: 5lb / 2268g

LRM-P **Locator Light Retention Replacement Male (pink) (4 pack)**
Retention: 3lb / 1361g

LRM-B **Locator Extra Light Retention Replacement Male (blue) (4 pack)**
Retention: 1.5lb / 680g

LRM-G **Locator Extended Range Replacement Male (green) (4 pack)**
Retention: 3-4lbs / 1361-1814g

LRM-R **Locator Extended Range Extra Light Retention Rep. Male (red) (4 pack)**
Retention: 1.5lbs / 680g

LBPRM **Locator Black Processing Replacement Male (4 pack)**



Locator Parallel Post

LPP **Locator Parallel Post (4 pack)**



Locator Measurement Guide

LAMG **Locator Angle Measurement Guide**



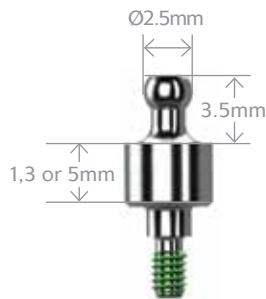
Locator Square Drive Tool

LSDT-15MM **Locator Square Drive Tool (15mm)**
Used with a torque wrench to seat Locator Abutments. 15mm in length.

LSDT-21MM **Locator Square Drive Tool (21mm)**
Used with a torque wrench to seat Locator Abutments. 21mm in length.



Ball Abutments



PYBA1 3.5mm Ball Abutment, 1mm Collar

PYBA3 3.5mm Ball Abutment, 3mm Collar

PYBA5 3.5mm Ball Abutment, 5mm Collar

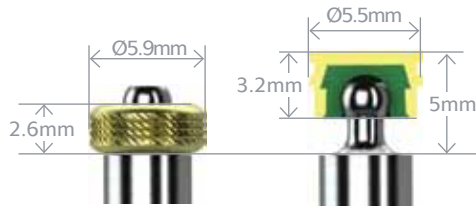
PGBA1 4.5mm Ball Abutment, 1mm Collar

PGBA3 4.5mm Ball Abutment, 3mm Collar

PGBA5 4.5mm Ball Abutment, 5mm Collar

PBBA1 5.7mm Ball Abutment, 1mm Collar

PBBA3 5.7mm Ball Abutment, 3mm Collar



Ball Abutments are used for retention of tissue-supported overdentures. They are recommended for relatively parallel implants. See below and on the facing page for attachment options. Ball Abutments may be used for indirect transfer impressions. Ball Abutment Analogs on facing page are used for producing a working cast. Titanium Alloy [Ti-6Al-4V]. Final torque: 30 Ncm.

O-ring Attachment Set

Standard O-ring attachment for processing into denture.



260-100 O-ring Attachment Set

Includes: (1) O-ring encapsulator, (2) Processing O-rings and (2) Clinical O-rings.

O-ring Individual Components



260-300 O-ring Encapsulator
Female receptacle processed into denture. Titanium. 2 per package.



260-220 Processing O-ring
Used for lab processing applications. Buna. 12 per package.



260-210 Clinical O-ring
Used for clinical applications. Silicone. 12 per package.

BALL ABUTMENT COMPONENTS

Ball Attachment Set

BCAS Ball Attachment Set

Includes: (1) Titanium Housing, (3) Female Nylon Inserts - white (more retention), pink (less retention), black (lab processing) and (1) Protective Disk (ref. BCPD, protects tissue during impression making or denture pick-up)

The Ball Attachment system offers several advantages over traditional O-ring attachments. It requires less mesial/distal/buccal/lingual space and offers four different levels of retention. The nylon retention inserts can be changed chairside.



Ball Abutment Components

BCAHT Attachment Housings - Titanium

For Resin pickup. 2 per package.



BCIY Yellow Nylon Insert

Clinical use. 2 per package.
Extra Soft Retention: 500-550g



BCIB Black Nylon Insert

Lab Processing and Chair-side
Denture Pick-up. 2 per package.



BCIP Pink Nylon Insert

Clinical use. 2 per package.
Soft Retention: 800-950g



BCIG Green Nylon Insert

Clinical use. 2 per package.
Elastic Retention.



BCIW White Nylon Insert

Clinical use. 2 per package.
Standard Retention: 1200-1300g



BCDR Directional Rings

Used for obtaining parallelism.
0°, 7° and 14° rings. Set of 3.



BCIST Insert Seating Tool

Used to seat nylon inserts in attachment housings.



BCR Reamer

Used to adjust retention of nylon inserts.



Ball Abutment Analogs

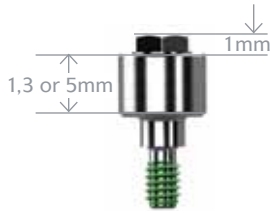
PYGBAA 3.5/4.5mm Ball Abutment Analog

PBBAA 5.7mm Ball Abutment Analog

Used to represent the Ball Abutment/Implant assembly in the working cast.
Only used in conjunction with Ball Abutments. Titanium Alloy [Ti-6Al-4V].



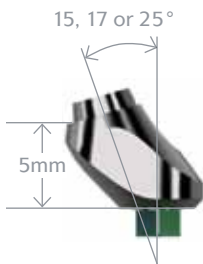
Abutment for Screw - Non-hexed



PYAFS1	3.5mm Abutment for Screw, 1mm collar
PYAFS3	3.5mm Abutment for Screw, 3mm collar
PYAFS5	3.5mm Abutment for Screw, 5mm collar
PGAFS1	4.5mm Abutment for Screw, 1mm collar
PGAFS3	4.5mm Abutment for Screw, 3mm collar
PGAFS5	4.5mm Abutment for Screw, 5mm collar
PBAFS1	5.7mm Abutment for Screw, 1mm collar
PBAFS3	5.7mm Abutment for Screw, 3mm collar

Used for multiple-unit restorations including: screw-retained restorations at the abutment level, cast alloy bars for overdentures and fixed/detachable (hybrid) restorations. Comes packaged with the Cover Cap (PXABCC). Titanium Alloy [Ti-6Al-4V]. Final torque: 30 Ncm.

Angled Abutment , Abutment for Screw - Hexed



PYAFS17	3.5mm Angled Abutment for Screw, 17 Degree
PGAFS15	4.5mm Angled Abutment for Screw, 15 Degree
PGAFS25	4.5mm Angled Abutment for Screw, 25 Degree
PBAFS15	5.7mm Angled Abutment for Screw, 15 Degree

Comes packaged with the Cover Cap (PXABCC) and Abutment Screw (PXAS). Titanium Alloy [Ti-6Al-4V]. Final torque: 30Ncm.

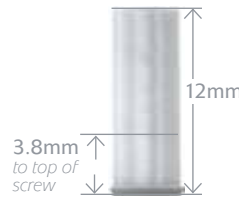
Gold & Plastic Copings, Abutment for Screw - Non-hexed



PXABGC

Gold Coping, Abutment for Screw

May be trimmed for height. Packaged with one Screw (regular), Abutment for Screw (see PXABS). Gold Alloy base with natural acetyl (Delrin® or Pomalux®). Final torque: 30Ncm.



PXABPC

Plastic Coping, Abutment for Screw

May be trimmed for height. Packaged with one Screw (regular), Abutment for Screw (see PXABS). Natural acetyl (Delrin® or Pomalux®). Final torque: 30Ncm.

Instant Fixed Overdenture Abutment - Non-hexed



PXIFO

Instant Fixed Overdenture Abutment

Used with Abutments for Screw for fabrication of immediate provisional overdentures. See See Fixed Provisional Overdentures (L0155) for more details. Packaged with one Screw (regular), Abutment for Screw (see PXABS). Abutment height is 9mm. Titanium Alloy [Ti-6Al-4V]. Final torque: 30Ncm.

Cover Cap, Abutment for Screw



PXABCC

Cover Cap, Abutment for Screw

Packaged with all Abutments for Screw. Titanium Alloy [Ti-6Al-4V]. Hand-tighten with .050" (1.25mm) Hex Driver.

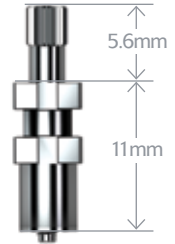
ABUTMENT FOR SCREW COMPONENTS

Direct Pick-up Coping, Abutment for Screw

PXABDC

Direct Pick-up Coping, Abutment for Screw

Used to make a direct pick-up impression (open-tray) at the abutment level. Packaged with the Screw (long), Abutment for Screw (PXABSL). Used only with Abutment for Screw. Titanium Alloy [Ti-6Al-4V]. Hand-tighten.

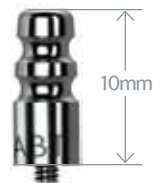


Indirect Transfer Coping, Abutment for Screw

PXABIC

Indirect Transfer Coping, Abutment for Screw

Used to make an indirect transfer (closed-tray) impression at the abutment level. Used only with Abutment for Screw. Titanium Alloy [Ti-6Al-4V]. Hand-tighten.



Analog, Abutment for Screw

PXABA

Analog, Abutment for Screw

Used to represent the Abutment for Screw/Implant assembly in the working cast. Not for use with implant-level impressions.



Screw (regular or long), Abutment for Screw

PXABS

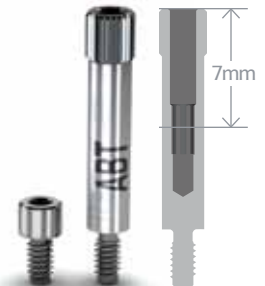
Screw (regular), Abutment for Screw (5 pack)

Used to retain bars or prostheses fabricated with the Abutment for Screw Copings. Utilizes the .050" (1.25mm) Hex Driver. Titanium Alloy [Ti-6Al-4V]. Final torque: 30 Ncm.

PXABSL

Screw (long), Abutment for Screw (5 pack)

Used in the lab when a longer screw is desired. Used only with the Abutment for Screw. Up to 7mm can be removed from the screw without losing the hex engagement. Titanium Alloy [Ti-6Al-4V]. Hand-tighten or torque to 30Ncm depending on application.



Hex Adapter, Abutment for Screw

PXHA

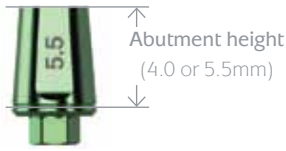
Hex Adapter, Abutment for Screw*

Required for placement of Abutment for Screw. May be driven by either Hand Wrench, Torque Wrench or AS123 Hand Unit.



*instrument o-rings wear out over time. If an instrument is no longer held securely by its associated driver, order a replacement o-ring through Customer Care. shop online at www.biohorizons.com

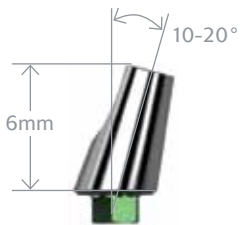
Single-stage Simple Solutions Abutments



- SYA40** Single-stage 3.5mm Simple Solutions Abutment, 4.0mm
- SYA55** Single-stage 3.5mm Simple Solutions Abutment, 5.5mm
- SGA40** Single-stage 4.5mm Simple Solutions Abutment, 4.0mm
- SGA55** Single-stage 4.5mm Simple Solutions Abutment, 5.5mm
- SBA40** Single-stage 5.7mm Simple Solutions Abutment, 4.0mm
- SBA55** Single-stage 5.7mm Simple Solutions Abutment, 5.5mm

Single-stage Simple Solutions crowns finish on the implant body. Packaged with Abutment Screw (PXAS). Titanium Alloy [Ti-6Al-4V]. Final torque: 30Ncm. See pages 28-29 for associated Simple Solutions components.

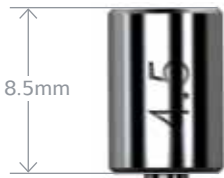
Angled Abutments for Cement-retained Restorations



- SYAA** Single-stage 3.5mm Angled Abutment (10°)
- SGAA** Single-stage 4.5mm Angled Abutment (15°)
- SBAA** Single-stage 5.7mm Angled Abutment (20°)

Used to fabricate cement-retained, single- or multiple-unit prostheses. Packaged with Abutment Screw (PXAS). Titanium Alloy [Ti-6Al-4V]. Final torque: 30Ncm.

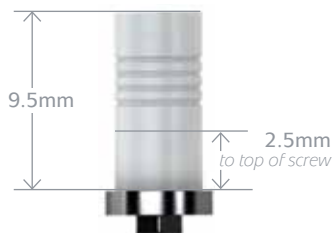
Titanium Abutment for Laser Weld



- SYTALW** Single-stage 3.5mm Titanium Abutment for Laser Weld
- SGTALW** Single-stage 4.5mm Titanium Abutment for Laser Weld
- SBTALW** Single-stage 5.7mm Titanium Abutment for Laser Weld

Used to fabricate multiple-unit laser welded bars. Packaged with Abutment Screw (PXAS) for clinical use and Direct Coping Screw (PXDCS) for laboratory use. Titanium Alloy [Ti-6Al-4V]. Final torque: 30Ncm.

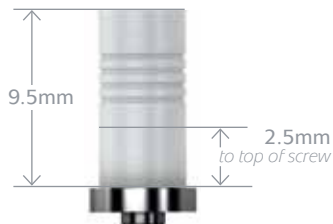
Custom Castable (UCLA) Abutments



- SYCAH** Single-stage 3.5mm Custom Cast Abutment, Hexed
- SGCAH** Single-stage 4.5mm Custom Cast Abutment, Hexed
- SBCAH** Single-stage 5.7mm Custom Cast Abutment, Hexed

Used for single-unit screw-retained or custom abutment cement-retained restorations. Packaged with the Abutment Screw (PXAS). Gold Alloy base with natural acetyl (Delrin® or Pomalux®). Final torque: 30Ncm.

Custom Castable (UCLA) Abutments - Non-hexed



- SYCAN** Single-stage 3.5mm Custom Cast Abutment, Non-hexed
- SGCAN** Single-stage 4.5mm Custom Cast Abutment, Non-hexed
- SBCAN** Single-stage 5.7mm Custom Cast Abutment, Non-hexed

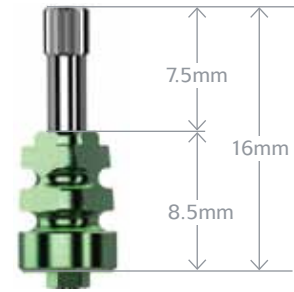
Used for multiple-unit, screw-retained restorations. Packaged with the Abutment Screw (PXAS). Gold Alloy base with natural acetyl (Delrin® or Pomalux®). Final torque: 30Ncm.

SINGLE-STAGE COMPONENTS

- SYDCH** **Single-stage 3.5mm Direct Pick-up Coping, Hexed**
- SGDCH** **Single-stage 4.5mm Direct Pick-up Coping, Hexed**
- SBDCH** **Single-stage 5.7mm Direct Pick-up Coping, Hexed**

Used to make an open-tray, implant-level, hexed-timed impression.
 Packaged with the Direct Coping Screw (PXDCS). Titanium Alloy [Ti-6Al-4V].
 Hand-tighten.

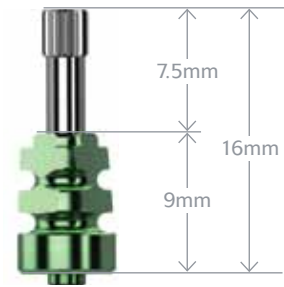
Direct Pick-up Copings - Hexed



- SYDCN** **Single-stage 3.5mm Direct Pick-up Coping, Non-hexed**
- SGDCN** **Single-stage 4.5mm Direct Pick-up Coping, Non-hexed**
- SBDCN** **Single-stage 5.7mm Direct Pick-up Coping, Non-hexed**

Used to make an open-tray, implant-level, non-hexed impression. Packaged with the extended Direct Coping Screw (PXDCS). Titanium Alloy [Ti-6Al-4V]. Hand-tighten.

Direct Pick-up Copings - Non-hexed



- SYIA** **Single-stage Implant Analog, 3.5mm**
- SGIA** **Single-stage Implant Analog, 4.5mm**
- SBIA** **Single-stage Implant Analog, 5.7mm**

Represents the Single-stage implant in a laboratory-fabricated, implant-level stone model.
 Not intended for use with Simple Solutions components. Titanium Alloy [Ti-6Al-4V].

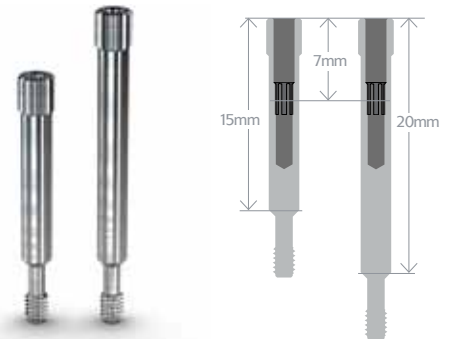
Implant Analog



- PXDCS** **Direct Coping Screw**
- PXDCSL** **Direct Coping Screw, Long**

Fits all implant prosthetic platforms. The PXDCS is packaged with all Direct Pick-up Copings. May also be used in place of the Abutment Screw (PXAS) when extra length is needed, or to maintain the screw access hole during fabrication of screw-retained provisional prostheses. Up to 7mm can be removed from the screw without losing the hex engagement. Utilizes the .050" (1.25mm) Hex Driver. Titanium Alloy [Ti-6Al-4V]. Hand-tighten or torque to 30 Ncm depending on application. PXDCSL adds 5mm length compared to the PXDCS.

Direct Coping Screws



- PXAS** **Abutment Screw**

Fits all implant prosthetic platforms. Low profile screw head. Packaged with all two-piece abutments. Utilizes the .050" (1.25mm) Hex Driver. Titanium Alloy [Ti-6Al-4V]. Final torque: 30 Ncm.

Abutment Screw



Prosthetic Instrumentation System



320-000 Complete Prosthetic Instrumentation System (shown)
Includes: AS123 Hand Unit / Hand Wrench / 30 Ncm Torque Wrench / .050" (1.25mm) Hex Driver, Regular / .050" (1.25mm) Hex Driver, Long / Hex Adapters for Abutment for Screw / 4mm Square Drive Extender / Sterilization Tray.

320-101 Basic Prosthetic Instrumentation Kit (not shown)
Identical to the Complete Prosthetic Instrumentation System (see above), but excludes the AS123 Hand Unit and Hex Adapters for Abutment for Screw.

300-070 Prosthetic Sterilization Tray (not shown)
Autoclavable tray for prosthetic instrumentation (included with the 320-000 and 320-101).



300-400 Hand Wrench*
Used on drive end of AS123 Hand Unit. Also fits individual Hex Drivers/Adapters and Bone Taps.



300-206 4mm Square Drive Extender*
replaces 300-205 starting June 2010



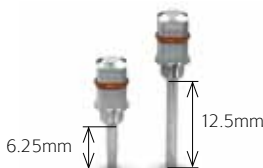
300-100 AS123 Hand Unit*
Provides improved vision and easy access to prosthetic components in posterior regions of the mouth. Hand Wrench and Drivers must be purchased separately. May also be purchased as part of the 320-000 Complete Prosthetic Instrumentation System (see above).



300-430 30 Ncm Torque Wrench
Used to deliver torque to prosthetic components.



PXHA Hex Adapter, Abutment for Screw*
Required for placement of Abutment for Screw. May be driven by either Hand Wrench, Torque Wrench or AS123 Hand Unit.



300-350 (regular) .050" (1.25mm) Hex Driver Regular or Long*
300-351 (long)
Used to tighten all hex-driven prosthetic screws.

*instrument o-rings wear out over time. If an instrument is no longer held securely by its associated driver, order a replacement o-ring through Customer Care. shop online at www.biohorizons.com

PROSTHETIC INSTRUMENTATION

Abutment Clamp

IMPAH Abutment Clamp

Used to hold two-piece abutments during delivery and tightening of the Abutment Screw.



Adjustable Torque Wrenches

ATW ITL Precise Adjustable Torque Wrench

Ratchet design places both implants and abutments with 9 distinct torque settings (15, 20, 25, 30, 35, 40, 45, 50 and 60 Ncm). A simple twist of the handle locks in precision-engineered torque values and guarantees accuracy and repeatability.



AGYR-15500 Anthogyr Torq Control® Torque Wrench

Ergonomic rotating handle design is the ideal solution for access to screws placed in the posterior. The 7 predetermined torque values (10, 15, 20, 25, 30, 32 and 35 Ncm) make it a tool of extreme precision.



Internal Implant Analog Handles

PYGAH Ø3.5/4.5mm Platform Analog Handle

PBAH Ø5.7mm Platform Analog Handle

Used to hold abutments for chairside or laboratory preparation, these handles mimic the implant/analog hex geometry. Abutments are secured to the handle with the standard Abutment Screw (PXAS). Comes in two platform sizes: Ø3.5/4.5mm and Ø5.7mm.



Hex Drivers

135-351 .050" (1.25mm) One-piece Hex Driver

134-350 .050" (1.25mm) Handpiece Hex Driver

134-450 .050" (1.25mm) Handpiece Hex Driver, Long

For installation and removal of Cover Screws, Healing Abutments and Abutment Screws. The Handpiece Hex Drivers are used with latch-type contra-angle handpieces. The Handpiece Hex Driver, Long (134-450) is 5mm longer than the standard version (134-350).



Clean-out Tap Tools

PXCT Implant Clean-out Tap Tool*

122-170 Abutment for Screw Clean-out Tap Tool*

Used to re-thread Internal implants or Abutments for Screw where the internal threads have become damaged. Requires a standard surgical Ratchet (130-000) or Hand Wrench (300-400) as a drive mechanism.



*instrument o-rings wear out over time. If an instrument is no longer held securely by its associated driver, order a replacement o-ring through Customer Care. shop online at www.biohorizons.com

Symbol Descriptions for Product Labeling

REF Reference/article number

LOT Lot/batch number

Use before expiration date (YYYY-MM)

Manufacture date (YYYY-MM)

STERILE |R| Sterile by gamma irradiation

NON-STERILE Non-sterile

Rx Only Caution: Federal (USA) law restricts these devices to the sale, distribution and use by, or on the order of, a dentist or physician.

Artwork label number

Prosthetic platform

- Ø3.5mm Prosthetic Platform
- Ø4.5mm Prosthetic Platform
- Ø5.7mm Prosthetic Platform

do not re-use

Single use only

Refer to Instructions for Use

CE 0473 BioHorizons products carry the CE mark and fulfill the requirements of the Medical Devices Directive 93/42/EEC

EU Authorised Representative
Quality First International
London E7 0QY United Kingdom
Tel. & Fax: +44-208-522-1937

References

1. Please see BioHorizons document #ML0130.
2. Cell Interaction with Microtextured Surfaces. JL Ricci, R Rose, JK Charvet, H Alexander, CS Naiman. *Presented at the Fifth World Biomaterials Congress*. May 29-June 2, 1996. Toronto, Canada.
3. Interactions between MC3T3-E1 cells and textured Ti6Al4V surfaces. Soboyejo WO, Nemetski B, Allameh S, Marcantonio N, Mercer C, Ricci J. *J Biomed Mater Res*. 2002 Oct; 62(1):56-72.
4. Cytoskeletal Organization in Three Fibroblast Variants Cultured on Micropatterned Surfaces. JC Grew, JL Ricci. *Presented at the Sixth World Biomaterials Congress*. Kamuela, HI. May 15-20, 2000.
5. Tissue Response to Transcutaneous Laser Microtextured Implants. CL Ware, JL Simon, JL Ricci. *Presented at the 28th Annual Meeting of the Society for Biomaterials*. April 24-27, 2002. Tampa, FL.
6. Osseointegration on metallic implant surfaces: effects of microgeometry and growth factor treatment. Frenkel SR, Simon J, Alexander H, Dennis M, Ricci JL. *J Biomed Mater Res*. 2002;63(6):706-13.
7. The Effects of Laser Microtextured Collars Upon Crestal Bone Levels of Dental Implants. S Weiner, J Simon, DS Ehrenberg, B Zweig, and JL Ricci. *Implant Dentistry*, Volume 17, Number 2, 2008. p. 217-228.
8. Marginal tissue response to different implant neck design. HE Bae, BDS, MDS, MK Chung, DDS, PhD, IH Cha, DDS, PhD, DH Han, DDS, PhD. *J Korean Acad Prosthodont* 2008 Vol 46 No 6.
9. Clinical Evaluation of Laser Microtexturing for Soft Tissue and Bone Attachment to Dental Implants. Pecora GE, Ceccarelli R, Bonelli M, Alexander H, Ricci JL. *Implant Dent*. 2009 Feb;18(1):57-66.
10. Human Histologic Evidence of a Connective Tissue Attachment to a Dental Implant. M Nevins, ML Nevins, M Camelo, JL Boyesen, DM Kim. *International Journal of Periodontics & Restorative Dentistry*. Vol. 28, No. 2, 2008.
11. The Implant Collar and Crestal Bone Levels. S Botos, H Yousef, B Zweig, S Weiner. *Academy of Osseointegration 2007 Annual Meeting*. Accepted for publication in *JOMI*.
12. Functional Surface Area: Thread-Form Parameter Optimization for Implant Body Design. J Todd Strong, Carl E. Misch, DDS, MDS, Martha W. Bidez, PhD, Prasad Nalluri. *Compendium / Special Issue*. Vol 19, No. 3, 1998.
13. Heat production by 3 implant drill systems after repeated drilling and sterilization. Chacon GE, Bower DL, Larsen PE, McGlumphy EA, Beck FM. *J Oral Maxillofac Surg*. 2006 Feb, 64(2):265-9.

ORDERING & WARRANTY INFORMATION

Product Support Specialist: _____

Cell phone: _____

Fax: _____

BioHorizons No Exceptions Lifetime Warranty on Implants and Prosthetics: All implants and prosthetic components include a No Exceptions Lifetime Warranty. Implant or prosthetic components will be replaced if removal of that product is due to failure (excluding normal wear to overdenture attachments).

Additional Warranties: BioHorizons warranties instruments, surgical drills, taps, torque wrenches and Virtual Implant Placement (VIP) treatment planning software.

(1) Surgical Drills and Taps: Surgical drills and taps include a warranty period of ninety (90) days from the date of initial invoice. Surgical instruments should be replaced when they become worn, dull, corroded or in any way compromised. Surgical drills should be replaced after 12 to 20 osteotomies.¹³

(2) Instruments: The BioHorizons manufactured instrument warranty extends for a period of one (1) year from the date of initial invoice. Instruments include drivers, sinus lift components, implant site dilators and BioHorizons tools used in the placement or restoration of BioHorizons implants.

(3) VIP treatment planning software: VIP treatment planning software warranty extends for a period of ninety (90) days from the date of initial invoice. The warranty requires that VIP be used according to the minimum system requirements.

(4) Compu-Guide surgical templates: Compu-Guide surgical templates are distributed without making any modifications to the submitted Compu-Guide Prescription Form and VIP treatment plan ("as is"). BioHorizons does not make any warranties expressed or implied as it relates to surgical templates.

Return Policy: Product returns require a Return Authorization Form, which can be acquired by contacting Customer Care. The completed Return Authorization Form should be included with the returned product. For more information, please see the reverse side of the invoice that was shipped with the product.

Grafton® DBM, MinerOss®, Mem-Lok®, Laddec® must be returned within ten (10) days of initial invoice. AlloDerm® and AlloDerm® GBR™ may not be returned or exchanged for credit due to storage requirement guidelines.

Disclaimer of Liability: BioHorizons products may only be used in conjunction with the associated original components and instruments according to the Instructions for Use (IFU). Use of any non-BioHorizons products in conjunction with BioHorizons products will void any warranty or any other obligation, expressed or implied.

Treatment planning and clinical application of BioHorizons products are the responsibility of each individual clinician. BioHorizons strongly recommends completion of postgraduate dental implant education and adherence to the IFU that accompany each product. BioHorizons is not responsible for incidental or consequential damages or liability relating to use of our products alone or in combination with other products other than replacement or repair under our warranties.

Compu-Guide surgical templates are ordered under the control of a Clinician. The Clinician recognizes responsibility for use. Therefore, regardless of the real or proven damages, the liability to BioHorizons is limited to the price of the product directly related to the reason for the claim.

Distributed Products: For information on the manufacturer's warranty of distributed products, please refer to their product packaging. Distributed products are subject to price change without notice.

Validity: Upon its release, this literature supersedes all previously published versions.

Availability: Not all products shown or described in this literature are available in all countries.

BioHorizons continually strives to improve its products and therefore reserves the right to improve, modify, change specifications or discontinue products at any time. Any images depicted in this literature are not to scale.

Direct Offices

BioHorizons USA
888-246-8338 or
205-967-7880

BioHorizons Canada
866-468-8338

BioHorizons Spain
+34 91 713 10 84

BioHorizons UK
+44 (0)1344 752560

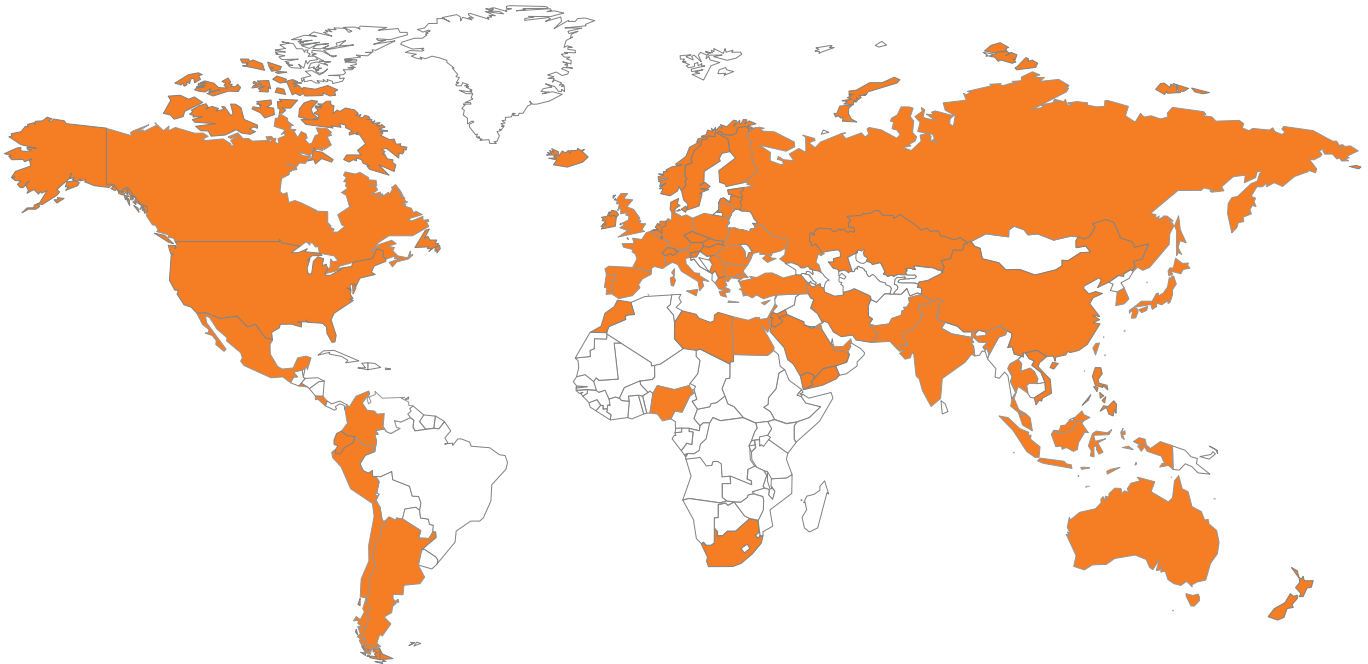
BioHorizons Germany
+49 7661-909989-0

BioHorizons Australia
+61 2 8399 1520

BioHorizons Chile
+56 2 361 9519

Distributors

For contact information in our other 70 markets, visit www.biohorizons.com



BioHorizons®, Laser-Lok®, MinerOss®, Autotac® and Mem-Lok® are registered trademarks of BioHorizons, Inc.

Grafton® DBM and LADDEC® are registered trademarks of Osteotech, Inc. AlloDerm®, AlloDerm® GBR™ and LifeCell™ are registered trademarks of LifeCell Corporation.

Spiralock® is a registered trademark of Spiralock Corporation. Locator is a registered trademark of Zest Anchors, Inc.

Delrin® is a registered trademark of E.I. du Pont de Nemours and Company. Pomalux® is a registered trademark of Westlake Plastics Co.

Mem-Lok® is manufactured by Collagen Matrix, Inc.

Not all products shown or described in this literature are available in all countries. As applicable, BioHorizons products are cleared for sale in the European Union under the EU Medical Device Directive 93/42/EEC and the tissues and cells Directive 2004/23/EC. We are proud to be registered to ISO 13485:2003, the international quality management system standard for medical devices, which supports and maintains our product licences with Health Canada and in other markets around the globe.

Original language is English. © 2010 BioHorizons, Inc. All Rights Reserved.

shop online at
www.biohorizons.com



ML0115

REV E APR 2010