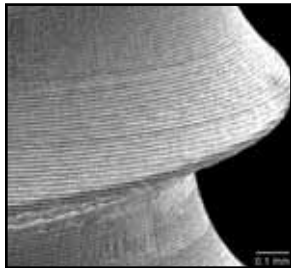




Short implants

Solutions for limited vertical spaces



- Faster osseointegration with Laser-Lok[®] technology across entire implant surface¹
- Excellent primary stability from tapered body
- Maximum surface area from power thread design
- Ideal for anatomically challenging conditions
- Wide array of restorative options



Tapered Internal Short Implants with Laser-Lok Complete

Packaged with Cover Cap. Mount-free delivery. Titanium Alloy.

| | | | |
|---------------|-------------|---------------|-------------|
| TL4607 | 4.6 x 7.5mm | TL5807 | 5.8 x 7.5mm |
| TL4609 | 4.6 x 9mm | TL5809 | 5.8 x 9mm |



Single-stage Short Implants with Laser-Lok Complete

Packaged with 2mm Healing Abutment. Mount-free delivery. Titanium Alloy.

| | | | |
|-----------------|-------------------------|-----------------|-------------------------|
| SGL5007* | 5.0 x 7mm, 4.5 Platform | SBL6007* | 6.0 x 7mm, 5.7 Platform |
| SGL5009* | 5.0 x 9mm, 4.5 Platform | SBL6009* | 6.0 x 9mm, 5.7 Platform |

*call for availability

To order, contact your BioHorizons representative or call us at 888.246.8338
shop online at www.biohorizons.com

1. Osseointegration on metallic implant surfaces: effects of microgeometry and growth factor treatment. SR Frenkel, J Simon, H Alexander, M Dennis, JL Ricci. *J Biomed Res.* 2002;63(6):706-13.